



# WEEKENDER

WEEKENDER  
April 30 2010

## Progress Continues on 306th Bridge Site

### Inside this issue:

Notes from Community	2
100 Days of Color	2
Election Committee	2
Annual Water Flushing	3
Garage Sale	4
Gulls	5
Gulls	6
Gulls	7
Candidates Sought	8
Calendar	9

Be sure and visit our web site  
at  
<http://www.surfsideonline.org/>



A lot of work was done on the Centurytel site adjacent to the Surfside 306th Bridge property on I Street. DPR volunteered their time and equipment on the project. George Miller was there as an advisor and did a lot of raking. Volunteers spent many hours there yesterday picking up sticks; raking and pruning trees. This is a picture of them working near the canal. The Centurytel land is prepared for grass seed planting. This ties in nice with our site and looks like one big park. The sign is in and looks good, except a little tall, but will look good after some plants are placed around and below it. Thanks to Dan and Aaron from the Water/Field Services crew for the work there. They got the sign in, moved the wire for the light and trimmed the grass along the canal bank. More work is planned on the other side of the canal (H Street side). Lots of hand work to do to prepare for some grass seed to cover the sand. Lots of sticks to pick up. It's all looking good.

## 100 DAYS OF COLOR PROGRESS



January 7, 2010 peeking thru.



April 23, 2010



Faded Glory the last of the 100 Days of Color

## 60th Annual Loyalty Day Celebration

---

Long Beach boasts the longest consecutively running Loyalty Day celebration in the nation. Events are scheduled over two-day period, including Children's Parade, annual Blessing of the Fleet, Fire Truck rides, and Loyalty Day Parade. 2010 salutes the Coast Guard, established by Grand Marshall President George Washington in 1790.



## Saturday Market at the Port

---

Shop for farm fresh produce, handmade crafts, fine art, plants, cut flowers, baked goods and mouthwatering prepared food. Watch the boats go by & catch of the day come in. Uniquely situated on the waterfront, Saturday Market is open 10 am – 4pm every Saturday from May through September.



## ANNUAL SYSTEM FLUSHING

### **Surfside Water Department to test water flow and hydrants and begin annual System flushing beginning Monday March 29, 2010**

The Surfside Water Department continues with the annual flushing program. The flushing will be done between the hours of 9:00 a.m. to 3:30 p.m. and will continue for approximately one month.

Customers may experience temporary low pressure and/or water discoloration during the flushing process. If these conditions continue after 3:30 p.m., call the Surfside Water Department at 665-4171 or 360-783-2426



Your Surfside Water/Field Services crew quickly responded to the water main break Saturday, April 24th on I Street. The immediate repair is appreciated.

## COMMUNITY EVENT

The Peninsula Association of Performing Artists will be presenting "Hello Dolly!" at Fort Columbia Theatre Four Weekends in May (May 7-May30) Fridays at 7:30 PM, Saturday and Sundays matinees at 3:00 PM

Tickets are available at Okie's Thriftway in Ocean Park, Stormin' Norman's in Long Beach. Note tickets are available at the door based on availability. For more information call 360-665-3025 or 360-665-6530



## **GARAGE SALE**

**SURFSIDE MEMORIAL DAY WEEKEND  
GARAGE SALE  
FRIDAY AND SATURDAY MAY 28<sup>TH</sup> AND 29<sup>TH</sup>  
10:00 AM TO 3:00 PM EACH DAY  
Surfside Business Office  
31402 H Street**

The proceeds from this sale will be used for the purchase of shrubs and landscaping materials at the 306<sup>th</sup> Street bridge site. The beautiful brass plaque to honor our veterans has arrived and has been set in a concrete base next to the flag pole.

Donated garage sale items are needed and can be left with Nancy at the compactor.

### ***NOTICE!***

***THERE WILL NOT BE A WEEKENDER FOR THE  
WEEK OF MAY 7TH***

### **Clam Digs Announced**

WDFW has tentatively scheduled a dig for the following dates and beaches:

- \* Tuesday April 27, 6:21 a.m., -1.0: Long Beach and Twin Harbors only
- \* Wednesday, April 28, 7:06 a.m., -1.4: Long Beach and Twin Harbors only
- \* Thursday, April 29, 7:50 a.m., -1.6: Long Beach and Twin Harbors only
- Friday, April 30, 8:32 a.m., -1.5: Long Beach, Twin Harbors, Copalis and Mocrocks
- \* Saturday May 1, 9:15 a.m., -1.0 : Long Beach, Twin Harbors, Copalis, Mocrocks and Kalaloch
- \* Sunday, May 2, 9:58 a.m., -0.7: Long Beach, Twin Harbors, Copalis, Mocrocks and Kalaloch



# GULLS

**Gulls** (often informally called **seagulls**) are birds in the family Laridae. They are most closely related to the terns (family Sternidae) and only distantly related to auks, skimmers, and more distantly to the waders. Until recently, most gulls were placed in the genus *Larus*, but this arrangement is now known to be polyphyletic, leading to the resurrection of several genera.

Gulls are typically medium to large birds, usually grey or white, often with black markings on the head or wings. They typically have harsh wailing or squawking calls, stout, longish bills, and webbed feet. Gull species range in size from the Little Gull, at 120 g (4.2 oz) and 29 cm (11.5 inches), to the Great Black-backed Gull, at 1.75 kg (3.8 lbs) and 76 cm (30 inches).

## Biology and habits

Most gulls, particularly *Larus* species, are ground nesting carnivores, which will take live food or scavenge opportunistically. Live food often includes crabs and small fish. Apart from the kittiwakes, gulls are typically coastal or inland species, rarely venturing far out to sea. The large species take up to four years to attain full adult plumage, but two years is typical for small gulls. Large White-Headed Gulls are typically long-lived birds, with a maximum age of 49 years recorded for the Herring Gull.

Gulls nest in large, densely packed noisy colonies. They lay two to three speckled eggs in nests composed of vegetation. The young are precocial, being born with dark mottled down, and mobile upon hatching.

Gulls—the larger species in particular—are resourceful, inquisitive and intelligent birds, demonstrating complex methods of communication and a highly developed social structure. For example, many gull colonies display mobbing behavior, attacking and harassing would-be predators and other intruders. Certain species (e.g. the Herring Gull) have exhibited tool use behavior, using pieces of bread as bait with which to catch goldfish, for example. Many species of gull have learned to coexist successfully with humans and have thrived in human habitats. Others rely on kleptoparasitism to get their food. Gulls have been observed preying on live whales, landing on the whale as it surfaces to peck out pieces of flesh.

## Taxonomy

The taxonomy of gulls is confused by their widespread distribution zones of hybridization leading to geneflow. Some have traditionally been considered ring species, but recent evidence suggests that this assumption is questionable. Until recently, most gulls were placed in the genus *Larus*, but this arrangement is now known to be polyphyletic, leading to the resurrection of the genera *Ichthyaelus*, *Chroicocephalus*, *Leucophaeus*, *Saundersilarus* and *Hydrocoloeus*. Some English names refer to species complexes within the group:

**Large white-headed gull** is used to describe the 18 or so Herring Gull-like species from California Gull to Lesser Black-backed Gull in the taxonomic list below.

**White-winged gull** is used to describe the 4 pale-winged, High Arctic-breeding taxa within the former group; these are Iceland Gull, Glaucous Gull, Thayer's Gull, and Kumlien's Gull.

Hybridisation between species of gull occurs quite frequently, although to varying degrees depending on the species involved (see Hybridisation in gulls). The taxonomy of the large white-headed gulls is particularly complicated.

In common usage, members of various gull species are often referred to as *sea gulls* or *seagulls*. This name is used by the layman to refer to a common local species or all gulls in general, and has no fixed taxonomic meaning.

The American Ornithologists' Union combines Sternidae, Stercorariidae, and Rhynchopidae as subfamilies in the family Laridae, but recent research indicates that this is incorrect.

## Gulls



Two Western Gulls (adult and juvenile) fight over a freshly-killed ground squirrel



A gull landing on a sea otter, probably trying to steal its prey



Gulls also steal food from people



A gull eating a sea star.



A gull attacking a coot. Note that this gull is probably going after the bread or other food item in the bill of this American Coot, though Great Black-backed Gulls are known to kill and eat coots.

## Gulls



Feeding frenzy!



Black-Headed Gull



## BOB HASKIN

As some of you may know, Bob Haskin had shoulder surgery at the end of March, and has been off work since. We hope to see him back in a month or so!

Get Well soon Bob!

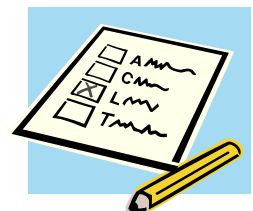
## DEADLINE SATURDAY FOR CANDIDATES FOR BOARD POSITIONS

There are four Board Positions that will be open for election at the annual meeting in July. The three year positions that are open are now held by: *Grant Murrell, Jim Flood and Gary Williams. The one year position is now filled by George Miller. If you have an interest in serving your community, and helping to assure that Surfside is a great place to live, consider running for one of these open positions. Applications for the Board Positions need to be received by Saturday, May 1, 2010 at 1:00 PM.*

The application packet for Board Positions is available at the Surfside Office.

Or

On the Surfside Web Site: <http://www.surfsideonline.org/>



## PLANTING DEMONSTRATION

THE PLANTING DEMO WAS SUPER... HAD 20 PEOPLE ATTENDED. RACHEL GANA PLANTED A CONTAINER OF SALAD GREENS WHICH WAS RAFFLED OFF (ANN THORESON WON!), THEN EVERYONE HAD A BALL PICKING OUT & PLANTING THEIR POTS. RACHEL PLANTED THE SURFSIDE POT WITH HERBS & OTHER EDIBLES WHICH WE ARE ALL INVITED TO SNIP AT WHEN WE NEED A LITTLE EXTRA PARSLEY, CHIVES OR PANSIES FOR OUR SALADS.



Valerie introducing Rachel



Above attendees, left the Planter of edibles at the Surfside Office.



Rachel Gana Master Gardener



Ann Thoreson winner!

# April 2010

SUN	MON	TUE	WED	THU	FRI	SAT
25	26	27 Architectural Committee Meeting 9:00 AM Community Relations Float Meeting 1:00 PM	28	29	30	
MAY 2010						1 
2	3	4 Architectural Committee Meeting 9:00 AM Community Relations Meeting 1:00 PM	5 RV Committee 9:00 AM Lands and Buildings 1:00PM	6 Nomination Committee 10:00 AM	7 Water/Field Services Committee Meeting 1:00 PM	8
9	10	11 Architectural Committee Meeting 9:00 AM  Bunco 6:30 PM	12	13	14 Nominating Committee noon to 5:00 PM	15 Board Meeting 9:00 AM
16	17	18 Architectural Committee Meeting 9:00 AM Community Relations Float 1:00 PM	19	20	21	22