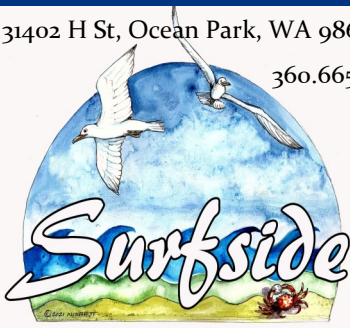


31402 H St, Ocean Park, WA 98640

360.665.4171



Weekender

September 23, 2022

Surfside Events

Peninsula Events

Entertainment/News

surfsideonline.org

Board Meeting Summary	2
Compactor / Styrofoam	3
Chipping Site Mulch / Covenant Corner	4
Fee Increase / Vegetation Spotlight	5
Tansy Ragwort / Pruning	6
Insight for Elders / Speakers Series #9	7
Upcoming Events / Blessing of the Animals	8
Pruning Clinic	9
Medicare Speaker	10
Wings over Willapa	11
Plant Clinic	12
Chili Cookoff	13
Architectural	14
September Calendar	15
October Calendar	16

Tell me about RVs...

RV Storage

If you are renting a storage space for your RV at the Surfside HOA storage facility you will receive a statement for renewal by the end of this month. If you will not rent your space for the new year, please call or visit the office so we can list those spaces as vacant and available for other members to use. If you want to keep your space, return the invoice with your payment as soon as possible. RV gate keys for the new year will be available after November 1st.

THE RV STORAGE SITE IS NEARLY FULL. THE ONLY SPACES AVAILABLE ARE LESS THAN 25'.

RV Use

October 31st marks the end of the summer RV season. Unless your lot is exempt per the covenants, RVs must be removed by October 31st. In the winter, November 1st to March 14th, you can use a RV winter permit for up to 60 days. The winter permit is issued for up to 21 days at a time and cannot exceed 60 days total. While using a winter permit **you must be actively occupying the RV**, meaning you must be in it each night. No full-time RV residency is allowed in most lots. If you need a winter permit call or visit the office.

RV Fines

At the August 20, 2022 regular meeting, the Board of Trustees increased the fines for RVs left on lots during the winter season (November 1st – March 14th). If you receive a violation notice, you have 10 days to correct the violation by removing your RV from your lot. If not corrected within the 10-day timeline, fines will begin on the 11th day. **Fines start at \$25 a day for the first 30 days, then go to \$75 a day beginning on the 31st day.**

Harmful algae is present on Seabreeze. Please... DO NOT swim in the lake. DO NOT allow your pets or children to swim in the lake or any bodies of water in Surfside ever (canal, Seabreeze, Deer, Bear, Skating). Harmful algae blooms are toxic to humans and animals. For more information visit the...

Washington Department of Ecology website.

**SURFSIDE HOMEOWNERS ASSOCIATION
REGULAR BOARD MEETING SUMMARY, SEPTEMBER 17, 2022**

President Kurt Olds called to order the September 17, 2022, Regular Board Meeting of the Surfside Homeowners Association at 9 a.m.

Trustees present: Kurt Olds, Ron Brumbaugh, Dick Sperry, John Curran, Mariann Schweitzer, Tom Shannon, and Dan Neptun. Cori Harms was absent.

Staff: Pauline Hitch, Kimber Holtermann

Agenda: The amended agenda for the September 17, 2022, Regular Board Meeting was approved (items K and L added).

Minutes: The minutes of the August 20, 2022, Regular Board Meeting, were approved. The September 2, 2022, Special Board Meeting minutes and the September 14, 2022, Special Board Meeting minutes, were approved as submitted.

Unfinished Business

- A. **Discussion Only - Restrictive Covenants document amended 08-20-2022** - The Business Office updated the document to include a hyperlinked table of contents and an index of the covenants. The numbering system in some areas needs to be reviewed for consistency.
- B. **Ensure the water department is retained in perpetuity** - From the Articles of Incorporation, Article II, item 13 was reviewed. The consensus is the HOA is required to maintain the water district per this article.
- C. **Address member Steve Wallace's concerns on Roberts Rules** - addressed under New Business item A and will be review by Trustee Dan Neptune.

New Business

- A. **Adopt Roberts Rules of Order** - Roberts Rules of Order, 12th Edition was approved to use as a guideline to conduct board meetings.
- B. **Resolution 2022-09-17 Evergreen Fence** - The fence replacement and reconfiguration by Evergreen Fence at the RV/Compactor area at a cost of \$13,160.15 was approved.
- C. **Vibratory roller for water department road cuts** - This item was tabled pending additional information.
- D. **Increase in property transfer fee** - The fee increase was approved. The transfer fee is now \$250.00.
- E. **TBVN request for \$10,000 for pilot program** - The pilot program would assist members in offsetting their costs to bring vegetation into compliance. The board approved the request at \$7,500, with the caveat the Budget Committee would need to approve as well.
- F. **Isolated funds through December** - a brief discussion ensued on the actions taken by the Water Department and Business Managers to identify accounts to freeze in the event projected income fell short of expectations.
- G. **Reactivate Policy and Procedures Committee** - motion to reactive the committee was approved.
- H. **Communications plan with members** – the board discussed opening two-way communication with members through a once-a-month coffee hour supported by CRC and requiring two trustees to attend, updating and then following Operating Policy 105 and providing streamlined electronic forms to collect and track member input. There was also a brief discussion on lack of control of incoming and outgoing correspondence sent via email.
- I. **Approval of Election Committee members** – Bonnie Gorton, Tom Curtis, Valerie Harrison, and Rick Dyer were approved.
- J. **New members for LBW and WSP Committees** - Gary Williams will join the LBW Committee and Jim Jones will join the WSP Committee.
- K. **RV use on multiple lots in winter** - The AC Trustee brought forward a concern that members were extending their stays during the winter by moving their RVs from one owned lot to another. The board sent this back to the Architectural committee to discuss further and propose a covenant change if necessary.
- L. **Letter of resignation** – The board accepted the resignation of Cori Harms effective September 14, 2022.

Staff, Trustee, and Committee Reports accepted as presented.

The board adjourned for a closed session at approximately 11:59 a.m. and reconvened at approximately 1:32 p.m.

Motions from closed session

No motions were made from closed session.

A motion was made at approximately 1:34 p.m. to adjourn the regular board meeting of the Surfside Homeowners Association.

We need your help at the compactor site.

Vern, the compactor attendant, and other Surfside HOA employees, are working hard to help keep the site operating as intended, with as little cost to our members as possible. Please help them by remembering what trash is and is not acceptable.

We accept only household trash (this is typical "garbage," not carpet or construction materials). If you have questions Vern and company will be happy to answer them. And please remember, they have been trained on what is acceptable to put into the compactors and recycling roll-offs. If they say an item you bring for disposal or recycling is not acceptable, please respect their expertise and take the unacceptable item back home with you. Ultimately, all unacceptable items cost every Surfside member in dues, by increasing disposal fees and expending employee time. The compactor and the crew are a great asset to our community so *please*...help keep expenses low for everyone by being a responsible user of the compactor site.

The disposal company, Waste Connections, which collects and dumps items from our recycling bins, will NOT accept dirty plastics. Dirty plastic ends up in the regular landfill. Please CLEAN OUT plastics and glass so they can be recycled.

The compactor is open:
 Mondays, 7 a.m. to 1 p.m.
 Thursdays, 12 p.m. to 6 p.m.
 Saturdays, 11 a.m. to 5 p.m.
 Sundays, 9 a.m. to 3 p.m.

PLEASE, be courteous and **DO NOT** leave your trash at the locked gate.

Styrofoam is not an accepted recycling item and it fills up the compactors and our local landfill. When purchasing items online or in local stores consider choosing merchandise that is NOT packed with Styrofoam. You can ask the store clerk to open the box to check packing material or if buying online, read the product specifications and country of origin.



BURN BAN IN EFFECT



Now that the chipper site has closed for the season, we would like to remind everyone there is free mulch to pick up at the site in front of the fence. For those members who would like to take advantage of the free mulch, but do not have a means to transport it to their property, we offer delivery for

\$100 per trailer trip (each trailer contains approximately 6-7 yards of material). Please contact the business office to request this service. Also, we will have a "Rake Party" in the near future to help spread the remaining mulch over the Surfside property adjacent to the chipper site. Look for more information in a future Weekender.

Mulch at Chipper Site, Courtesy T. Shannon

2.9 Recreational Vehicle Use

Recreational vehicles must be registered, licensed, and maintained in a mobile condition at all times. A *Conditional Use Permit* must be obtained annually, prominently displayed and be visible from the street.

Summer occupancy ends October 31st!

"2.9a.1 Conditional Use Permits shall be issued as follows: ...

Winter occupancy, from November 1, through March 14, of a recreational vehicle is permitted as a temporary vacation/short term dwelling. It must display a current motor vehicle license and meet all health codes for temporary recreational use. During winter visits, recreational vehicles must be occupied. Short term permits shall be issued from the Surfside business office for periods up to 21 days, not to exceed 60 days total, and shall be placed as stated in 2.9a above.

2.9a.2 No commercial use of recreational vehicles shall be permitted in Surfside Estates.

2.9a.3 ... winter storage of a recreational vehicle, from November 1 through March 14, is not allowed on any platted parcel, except in a car port or enclosed building, provided however that such equipment may be parked anywhere on residential premises for time needed during loading or unloading.

2.9a.5 Construction Permit

An RV may be used as a temporary dwelling during construction under the following conditions:

- a. proof of County building permit
- b. active and continuous building construction
- c. septic and water connections are available and in use
- d. permits will not exceed one year duration, unless the RV Committee has granted an extension for cause. Owners may apply for an extension if the Architectural Committee has granted a building extension.

2.9a.6 Sewage and wastewater from recreational vehicles and/or tent sites must be disposed of as per Washington state regulations: i.e., these wastes shall not be dumped on the ground, in pits or in cesspools.

2.9a.7 All RV usage, parking, and storage shall occur on the owner's property and shall conform to the minimum Surfside covenant setbacks for the parcel."

Covenant
Corner

Fee Increase

On September 17, 2022, the Board of Trustees approved an increase to the property transfer fee. It went from \$200 to \$250. We suggest sellers negotiate who pays the fee (buyer, seller, or split between both).



Vegetation Spotlight

Almost all the Juniper Trees are salt and drought tolerant, so they are top choices for beach landscaping. They form dense, upright plants, with some varieties having more character than others. An outstanding variety for the beach is the Hollywood Juniper, *Juniperus chinensis* ‘Kaizuka’ (also known as ‘Torulosa’), which, despite its name is hardy to zone 4. This plant is very different from the normal flat, spreading junipers or narrow upright ones; although they are good choices, too.

Every individual bush is different, with multiple branches reaching out, and rounded clusters of dense foliage developing as the tree matures. Plus, it already has the wind-swept look that makes it perfect along the shore.

Another tough Juniper with a very narrow form is the Skyrocket Juniper, often recommended for seashore planting. *Juniperus virginiana* ‘Skyrocket’ lives up to its name and grows into a silver-blue column of foliage – a great contrast with rounded plants like wax myrtle.

Tansy Ragwort - Control toxic tansy before it goes to seed

From the Chinook Observer - Wednesday, August 31, 2022

PACIFIC COUNTY – Have you noticed the bright yellow flowers appearing in shaggy clusters along Pacific County’s roads and in vacant lots? This is tansy ragwort (*Jacobaea vulgaris*), and it is not a nice plant.

Tansy ragwort is highly toxic to humans and livestock. When ingested it can cause bloody diarrhea, liver failure, and a myriad of other unpleasant symptoms, including death.

Despite its wide distribution, tansy is relatively easy to control (compared to most other noxious weeds). All you need is a pair of gloves and some free time. Plants can easily be pulled-up, roots and all, by grabbing near the bottom of the stem and pulling up. Place the plants into plastic bags and dispose of them at your nearest solid waste facility. For larger infestations, the use of herbicide may be appropriate. Effective control can be achieved with products containing glyphosate, 2,4-D, and/or triclopyr (For more information regarding the use of herbicides, contact the Pacific County Noxious Weed Control Board).



In Pacific County, landowners are required by state law to control tansy ragwort identified on their property and those who fail to do so may be issued a civil infraction and be required to pay a fine. Penalties are assessed per parcel, per noxious weed species, per day after expiration of the notice to control.

If you have tansy ragwort on your property, get rid of it immediately. Do not wait for it to become a bigger problem than you are equipped to handle. Weed control projects can cost thousands of dollars, and that does not include any fines that you may have accrued for failure to control the noxious weeds. For more information about tansy ragwort or other noxious weeds, contact the Pacific County Noxious Weed Control Board, Jeff Nesbitt, Director, at 360-214-9835 or jnesbitt@co.pacific.wa.us. The board’s website is PCweeds.org

ARBOR DAY FOUNDATION, WHEN TO PRUNE

This depends to a large extent on why you prune. Light pruning and the removal of dead wood can be done anytime.

SUMMER PRUNING

To direct the growth by slowing the branches you don’t want, or to “dwarf” the development of a tree or branch, pruning should be done soon after seasonal growth is complete. Another reason to prune in the summer is for corrective purposes. Defective limbs can be seen more easily.

INSIGHT FOR ELDERS

IDENTIFYING EDIBLE PENINSULA MUSHROOMS

Presented by **REBECCA LEXA, NATURALIST**

Location: Oysterville Schoolhouse, 3322 School Road

Date: Tuesday, September 27, 2022, 2:00 to 4:00 pm

Fall is a fabulous time for hunting for edible mushrooms on the Long Beach Peninsula! However, concerns about picking the wrong mushrooms keep a lot of people from going out to forage. Master Naturalist Rebecca Lexa will give you the basics of how to identify mushrooms and some of the tools that can help you along the way. You'll also learn about some of the beginner-friendly edible mushrooms that grow on the peninsula during fall, and some species to avoid, too! Recommended reading rounds out the talk with some suggestions for further resources to make your mushroom hunting forays better--and safer! (Please note there will be NO discussion of Psilocybin in this talk.)

Rebecca Lexa is a certified Master Naturalist, nature educator, tour guide, and writer living on the Long Beach Peninsula. She writes a bimonthly column, *Rainy Rambles*, in the *Coast Weekend* paper, and is an active volunteer with the Friends of Willapa National Wildlife Refuge, among other entities. More about her work may be found at RebeccaLexa.com.

Contact Tony Pfannenstiel at Tonypfan@aol.com for more information.

The Mission Statement of INSIGHT FOR ELDERS is to provide opportunity for continued learning for seniors through lectures and discussions on critical topics relevant to their physical, mental and emotional wellbeing. Subjects will include legal and financial advice for seniors, habits for living well, recreational opportunities, death and dying, living with pain, local ecology and geology, and much more. We are hoping these lectures will provide for rousing discussion and opportunities to form a better community. Lectures locations will be held throughout the Peninsula for your convenience.

The Community Relations Committee Presents the Speaker Series, #9

Pacific County's Department of Community Development
Code Enforcement Officer, **Travis Ostgaard**

Thursday, October 6th
at 2 p.m. at the Business Office

Space is limited.

Please **RSVP** to 360-665-4171 or
office@surfsideonline.org



Upcoming Events

- * September 22nd-25th, Wings Over Willapa Festival
- * September 23rd, Pruning Clinic, Cranberry Museum, 9:30 to 11:30 a.m.
- * September 24th, Plant Clinic, Heritage Museum, 10 a.m. to 2 p.m.
- * September 24th, Medicare Seminar, Speaker Series #8, Business Office, 10:00 a.m.
- * September 27th, Insight for Elders-Edible Mushrooms, 2 to 4 p.m. in Oysterville
- * September 29th, Neighborhood Watch Interest Meeting, Business Office, 2 to 3 p.m.
- * October 6th, Speaker Series #9, Travis Ostgaard, Business Office, 2 p.m.
- * October 7th, Book Club, Business Office, 3 p.m.
- * October 7th, Peninsula Arts Association Fall Art Show, 10 a.m. to 5 p.m. at the Old Long Beach Train Depot
- * October 8th, Chili Cook-Off, Oysterville School House, 10 a.m. to 3 p.m.

SOUTH PACIFIC COUNTY HUMANE SOCIETY

Annual Blessing of the Animals

SATURDAY, OCTOBER 1, 2022
1:00 PM
Rain or Shine

All Socialized Animals Welcome
Meet us in in the parking area of
330 Second St NE • Long Beach, WA

**Donations
Most
Welcome!**

*Blessing Courtesy of
The Rev Richard Loop, Vicar
St Peter Episcopal Church*

In Honor of St Francis of Assisi
Patron Saint of Animals & the Environment



Please do not try to take the plants at the compactor site home with you. We use these as vehicle barriers around the cardboard recycling bin. Thank you.

WSU Master Gardeners of Grays Harbor and Pacific Counties



present

Pruning Clinic

Friday, September 23rd

What: Learn to prune a variety of trees and bushes. Bring your favorite pruning tools for hands-on practice.

Where: PACIFIC COAST CRANBERRY RESEARCH FOUNDATION
Cranberry Museum 2907 Pioneer Rd. Long Beach

When: Friday, September 23rd, 9:30 am to 11:30 am

Dress for the weather. Join us for education and fun at the Cranberry Museum!



For more information, contact Eva at throughevaslens@gmail.com



9/24/2022 at 10:00am

Got Medicare?

Turning 65?

**LOCATION: Surfside Office/Boardroom 31402 H St.
Ocean Park, WA**

**BRING YOUR QUESTIONS AND
REVIEW THE BASICS OF WHAT
MEDICARE COVERS AND THE
OPTIONS AVAILABLE.**

**Steve McPeak 509-440-4765
stevemcpeak@wespeakmedicare.org**



The speaker is not with the federal Medicare program. While we are appointed with all major carriers who work with brokers, we do not offer every plan available in your area. Any information we provide is limited to those plans we offer in your area. Please contact Medicare.gov or 1-800-MEDICARE to get information on all your plan options.

Friends of Willapa National Wildlife Refuge

presents
the 4th Annual

save
the
date

WINGS OVER WILLAPA



For online auction or donations contact Sylvia at sylviapelizza@gmail.com or call 808-772-1675.

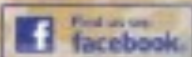
FESTIVAL

September 22-25, 2022

LONG BEACH PENINSULA, WA

EVENTS TO BE HELD THROUGHOUT SOUTHERN PACIFIC COUNTY

BIRDING | TOURS | ART | WORKSHOPS | WILDLIFE | NATURE HIKES



WWW.WINGSOVERWILLAPA.ORG



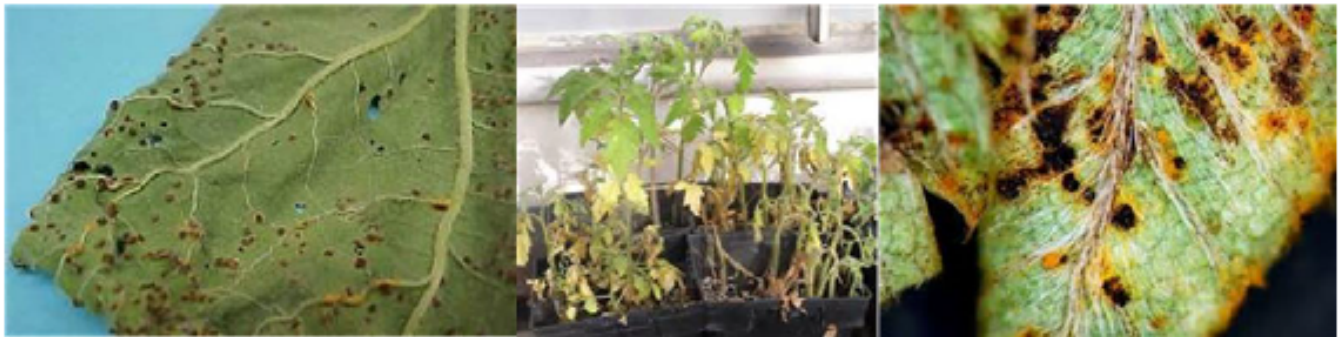
WSU Master Gardeners of Pacific County
sponsor

Plant Clinic & Information Center

Saturday, September 24, 10am to 2pm

Columbia Pacific Heritage Museum, Discovery Garden
115 SE Lake Street, Ilwaco, WA

Come ask a Master Gardener!



If you have questions such as:

- I'm interested in composting. What would you suggest?
- My one rhododendron is wilting and dying. What's wrong?
- What organic amendments should I use in my yard?
- How do I prepare my yard for the fall and winter?

Bring samples if you can.

We will also have handouts on the following topics:

- Cover Crops for Home Gardens West of the Cascades
- Preparing Your Garden for Winter

For more information, contact Bev Arnoldy at bevarnoldy@gmail.com



The Community Relations Committee
is sponsoring a
Chili Cook-Off, Bazaar, and Bake Sale

Saturday, 10/8/22 from 10 am to 3 pm

Oysterville Schoolhouse, 3222 School Road

Chili Entries: Free - bring your favorite!

Chili entries accepted 10 am-11:45 am

→ Minimum 4 quarts ←

Tasting Admission: \$5

Taste and vote from 12 noon to 2 pm

Awards at 2:30 pm

Bring your crafts to sell,
craft tables available for \$15

Bake sale contributions appreciated.

***** Net proceeds benefit "Pack2School" *****

For information call: 360-665-4171 or 352-586-0082

ARCHITECTURAL COMMITTEE

Plan on installing a fence, a shed, a gazebo or building a garage or a house?

REMINDER...

ALL building plans must be submitted to the Architectural Committee prior to any construction.

Pacific County will not approve permitting until the committee has signed off on all plans.

The committee meets every Tuesdays at 9 a.m. at the business office. The building packets are on our website at surfsideonline.org/forms/ or you can pick them up from the business office. Applications must be received by end of day on Thursdays to make the agenda for the following Tuesday's meeting.

Please notify the business office if you want to attend the meeting in person.

If you are building on a vacant lot without an address, please post a sign so the committee knows which lot will be developed.

Two (2) sets of plans must be submitted to the committee. Once approved, you will get a copy of the approved plan. Take it to the county for their approval as needed. Surfside will retain one set of approved plans to keep on file.

For more detailed information on the Architectural Committee duties and guidelines go to our website surfsideonline.org, select the Other tab, then Governing Documents. Download the Operations Manual and the Surfside Restrictive Covenants or call the business office 360-665-4171 with questions.

Thank you!

September 2022

SUN	MON	TUES	WED	THURS	FRI	SAT
				1	2 TBVN 1 pm Special Board Mtg 3 pm	3 Tsunami Run, 9 am
4	5	6 AC 9 am CRC 1 pm	7	8 LB&W 9 am WSP 11 am	9	10 Card Making Class 10 am
11	12 Budget Cmte 10:30 am	13 AC 9 am	14 Special Board mtg 3 pm	15	16	17 Board Meeting 9 am
18	19	20 AC 9 am	21 Speaker Series Astro- photography 2 pm—Bus Ofc	22 CANAL TREATMENT S&S 3 pm	23	24 Medicare Information 10 am
25	26 Budget Cmte 10:30 pm	27 AC 9 am EMC 1 pm	28	29 Neighborhood Watch 2 pm	30	

LEGEND

AC=Architectural CRC=Community Relations EMC=Emergency Management

LB&W=Land, Buildings & Waterways S&S=Safety and Security

TBVN=Tree, Brush, Vegetation and Noxious Weeds WSP=Water Systems Planning

October 2022

SUN	MON	TUES	WED	THURS	FRI	SAT
						1
2	3 Budget Cmte 10:30 am	4 AC 9 am CRC 1 pm	5	6 LB&W 8:30 am WSP 11 am	7 TBVN 1 pm Book Club 3 pm	8 Chili Cook- Off 10 am to 3 pm
9	10	11 AC 9 am	12	13	14	15 Reg. Board Mtg 9 am
16	17	18 AC 9 am	19	20 S&S 3 pm	21	22
23	24	25 AC 9 am EMC 1 pm	26	27	28	29
30	31					

LEGEND

AC=Architectural CRC=Community Relations EMC=Emergency Management

LB&W=Land, Buildings & Waterways S&S=Safety and Security

TBVN=Tree, Brush, Vegetation and Noxious Weeds WSP=Water Systems Planning