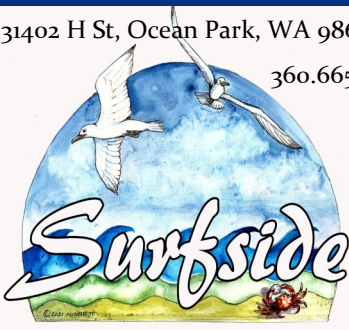


31402 H St, Ocean Park, WA 98640

360.665.4171



Weekender

November 18, 2022

Surfside Events

Peninsula Events

Entertainment/News

surfsideonline.org

Surfside Homeowners Association
Regular Board Meeting Agenda
November 19, 2022

2023 Budget Info	2
Winter Storms	3
Compactor / Beach Debris	4
Covenant Corner / PUD Supply Chain	5
Thawing a Turkey	6
Emergency Caches / Volunteers needed	7
Clark Plant Sale / Artisan Tour	8
Wreath Class / Shoeboxes of Joy	9
Noxious Weed Disposal	10
Humane Society / Upcoming Events	11
Local Holiday Events	12
Local Concerts	13
AC Committee	14
November Calendar	15
December Calendar	16

1. Call to Order - Regular Board Meeting
2. Adopt the November 19, 2022 - Regular Board Meeting Agenda
3. Safety Message
4. Approval of the October 15, 2022, Regular Board Meeting Minutes and November 7, 2022, Special Board Meeting Minutes
5. Floor comments *(The audience should not speak or interject unless recognized by the President.)*
6. Unfinished Business
 - A. Discuss member Steve Wallace's concerns on Robert's Rules (D. Neptun)
 - B. Reduction of water fees (R. Brumbaugh)
7. New Business
 - A. Corrective motion for new TBVN fine structure starting date; existing violations charged old rate through November 30th then new rate applies (T. Shannon)
 - B. Discussion/motion on volunteer non-disclosure agreement (T. Shannon)
 - C. Discussion/motion on use of the board@surfsideonline.org email account for all incoming and outgoing correspondence (R. Brumbaugh)
 - D. Motion on revised trustee assignments (K. Olds)
 - E. Discussion on limiting the number of household pets (R. Brumbaugh)
8. Communications
 - A. Incoming Correspondence, Discuss/Assign Incoming Correspondence (K. Olds)
 - B. Outgoing Correspondence
 - C. Meetings and Contacts
9. Staff, Trustee and Committee Reports
 - A. Treasurer's Report (D. Sperry)
 - B. Water System Planning Committee (R. Dyer)
 - C. Architectural Committee (J. Curran)
 - D. Compliance Report (K. Olds, T. Shannon)
 - E. Community Relations Committee (S. Mosher)
 - F. Land, Buildings and Waterways Committee (R. Brumbaugh)
 - G. Tree, Brush, Vegetation, and Noxious Weeds Committee (T. Shannon)
 - H. Emergency Management Committee (J. Curran)
 - I. Safety and Security Committee (D. Neptun)
 - J. Elections Committee (R. Brumbaugh)
 - K. Firewise (T. Shannon)
 - L. Other reports
10. Receipt of Committee Reports*
11. Miscellaneous
12. Board of Trustee Floor Topics for the Good of the Order
13. Adjourn*

* Requires Board Action

TENTATIVE ZOOM LINK
 (dependent on a successful technical setup at the Senior Center)
<https://us06web.zoom.us/j/83383426869?pwd=dmFFWTBlcU5TZVgxZkhFTDBKdFozdz09>
 Meeting ID: 833 8342 6869
 Passcode: 521977

The office will be closed—Thursday and Friday, November 24th to 25th for Thanksgiving.

The 2023 Budget Ratification absentee ballots will be tallied at the HOA business office board room by staff and volunteers on Friday, November 18th starting at 9:30 a.m. You may observe the counting in person from the gallery or you may observe via Zoom using the link below. Comments from the gallery or interfering with the ballot counters is not acceptable. The counting will be recorded.

Zoom: <https://us06web.zoom.us/j/84008969444?pwd=N0VoK05ZNERvOWFaS05NZEc1Y2tSZz09>

Meeting ID: 840 0896 9444

Passcode: 154764

2023 Budget Ratification

The board approved the proposed 2023 budget. The business office mailed each member a packet several weeks ago.

The budget mailer included:

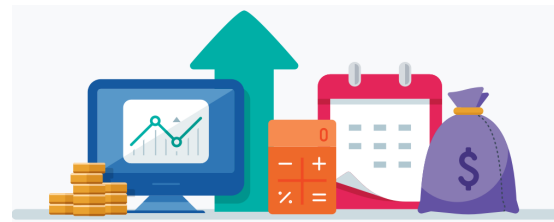
1. a memorandum for members with instructions on voting;
2. a synopsis of the budget challenges from our treasurer;
3. a summary of the budget itself;
4. an absentee ballot if you cannot attend the meeting;
5. a Christmas program donation form;
6. a card to opt-in to electronic delivery of notices;
7. and a Surfside directory and map.

2023 Budget Ratification Meeting

Saturday, November 19th at 9 a.m.

Peninsula Senior Activity Center

21603 O Lane, Ocean Park



Please familiarize yourself with the contents of the mailer and read all instructions. If you will vote by absentee ballot you must **SIGN AND DATE** the ballot for your vote to count. If you are unable to attend the meeting fill out and return your absentee ballot to the business office **no later than 2 p.m., Friday, November 18th**. Return your ballot, the opt-in card, and the charitable contribution form (if any) in the self-addressed envelope provided in the mailer. **BALLOT BOX IN THE LOBBY AT BUSINESS OFFICE**

Ilwaco High School Events

Winter Band Concert: November 22nd at 7 pm, Hilltop Auditorium

Winter Choir Concert: November 29th at 7pm, Hilltop Auditorium

Holiday Follies: Holiday Jazz, December 10th at 7 pm, Ilwaco High School

Ilwaco Drama Club presents *Mutually Assured Destruction*, 10 plays about Brothers and Sisters, December 16-18th, Ilwaco High School. Call 360-642-3731 for more information on play times.



WINTER STORMS

Winter Storms can range from moderate snow over a few hours to blizzard conditions with blinding, wind-driven snow or freezing rain that lasts several days. The time to prepare is before the snow falls and ice forms.

Preparing for winter storms

- * Prepare your home for cold weather. Install storm windows. Insulate outside walls, attics or crawl spaces. Wrap pipes, especially those near cold outer walls or in attic crawl spaces. Repair leaks in the roof, around the doors and in the windows.
- * Have appropriate cold weather clothing available.
- * Make sure your fireplace functions properly.
- * Have rock salt or sand on hand for traction on ice.
- * Fill your gas tank before snow starts falling.

During a winter storm

- * Wear several layers of loose fitting, light weight, warm clothing rather than one layer of heavy clothing. Wear mittens rather than gloves. Wear a warm woolen hat.
- * Do not drive unnecessarily.
- * Reduce the temperature in your home to conserve fuel. Heat only the areas of your house you are using. Close doors and curtains or cover windows and doors with blankets.
- * Use alternative heat methods safely. NEVER use a gas or charcoal grill, hibachi or portable propane heater to cook indoors or heat your home.
- * Be careful when shoveling snow. Do not overexert yourself.
- * Be sure to eat regularly, food provides calories that maintain body heat.
- * Watch for signs of frostbite and hypothermia—slurred speech, disorientation, uncontrollable shivering, stumbling, drowsiness and body temperature of 95 degrees Fahrenheit or less.
- * If you become trapped outside, get out of the wind and stay dry. Build a lean-to or snow cave if nothing else is available. Do NOT eat snow; it will make you too cold.

If in your vehicle

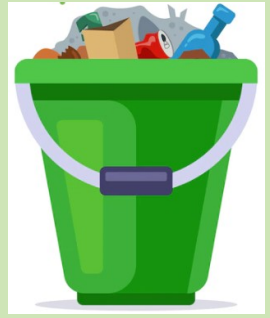
- * Make sure someone knows where you are going. Stay on the main roads.
- * If you must stop, remain inside the vehicle. Use a bright distress flag or your hazard lights to draw attention to your vehicle.
- * If trapped in a blizzard, clear your tail pipe and run your engine and heater for 10 minutes every hour. Open your windows slightly.
- * During night hours, keep the dome light on in the car so rescue crews can see your vehicle.
- * Keep an emergency kit in your vehicle. Include a three-day supply of water and non-perishable food that can be eaten without being cooked. Include a blanket or sleeping bag for each passenger, a flashlight, cell phone, shovel, sack of sand or kitty litter, booster cables, flare, coffee can with lid and toilet paper.

A reminder...

We only accept household trash at the compactor site. This is typically standard "garbage," not carpet, construction, appliances, or flammable materials. If you have questions, the attendants are happy to answer – but please remember, they are trained on what items are and are not acceptable to put in the compactor. If they say an item you bring for disposal or recycling is not acceptable, please respect their expertise and take the unacceptable item back home with you.

All non-household items can be taken to the Peninsula Sanitation Transfer Station at 4404 67th Place in Long Beach. The transfer station is open Monday through Friday from 8:30 am to 4:30 pm and on Saturdays from 10:00 am to 2:00 pm. They are closed on Sunday. The fee is \$25 for a truckload up to 320 lbs.

Vern, the primary compactor attendant, had a great idea. It seems everyone has something they want to get rid of, so he suggests talking to your neighbors and planning a "dump run." Neighbors can share the load and the cost. This is a great way to get to know your neighbors and help each other while also disposing of items you no longer want.



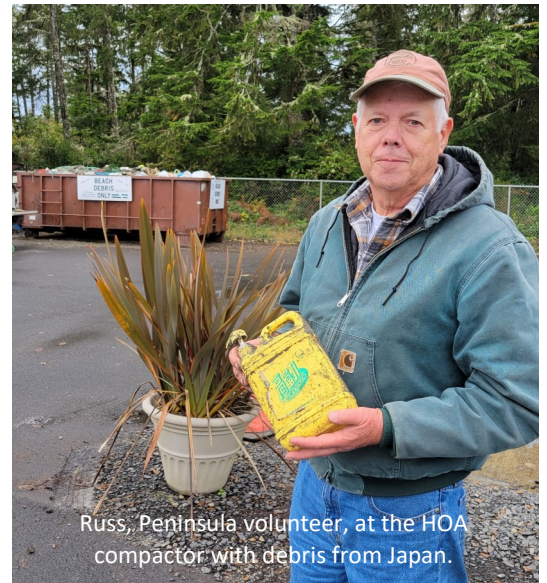
Peninsula Volunteer and Surfside Member Russ Lewis, talks about beach debris...

I started cleaning the beach as a volunteer for the Willapa National Wildlife Refuge from the Oysterville Approach beginning in June 2012 and have been doing it ever since. I'm still a refuge volunteer which enables me to pick the beach clean of trash/debris all the way up to Leadbetter Point. I am grateful to have had assistance over the years by other volunteers who work Surfside and points south. Early on I coordinated with Surfside Homeowners Association, who graciously allowed me to establish a 20 cubic yard dumpster at the compactor site for anyone who collects trash/debris off the beach. **Only marine debris and trash collected from off the beach should go into the dumpster.**

Funding of this dumpster is coordinated with Willapa National Wildlife Refuge, Washington State Department of Ecology, Grass Roots Garbage Gang and for the past three years through a grant from NOAA. I track the weight and cost of the dumpster per grant requirements. **Surfside membership monies do not pay for any part of this dumpster**, but we are very appreciative it can be situated at the HOA's secured compactor site.

Since 2012 marine scientists from Hatfield Marine Science Center in Newport, Oregon have studied the dumpster contents, including weight and identification of hitchhiking marine specimens from long range trash/debris. Hatfield also studied potential Japanese Tsunami Marine Debris when it was washing ashore. Scientists have made subsequent visits to document beached debris with attached marine species. We have been averaging over 7 tons of trash/debris collected and removed off our shoreline per year since 2012; around 85 total tons since we began.

I want to let everyone know Vern is doing a great job of running the compactor site with cheerfulness, fairness and attention to detail. The site itself has never looked so clean and orderly. There are times when members insist on dumping household debris into the beach dumpster claiming it came from the beach; but we know from experience it did not, especially when it has pine needles and garden snails stuck to it. I often go into the dumpster to pull out bootlegged stuff I know doesn't belong. Hats off to Vern, Paul and Chuck!



Russ, Peninsula volunteer, at the HOA compactor with debris from Japan.

Summer RV season is over.

Covenant Corner

Frequently asked questions about RVs:

- ⇒ When is winter RV season? November 1st through March 14th.
- ⇒ How long can I stay in my RV during winter? Short-term winter permits are good for periods up to 21 days. **You cannot exceed 60 days total.** Come to the business office to get a winter permit.
- ⇒ **Can I use my RV as my permanent residence? No.** RVs may only be used as a temporary vacation/short term dwellings. No full-time living in an RV is allowed.
- ⇒ Can I store my RV, unoccupied, on my lot during the winter months? It depends. Certain lots are allowed to have **one** RV stored on a continuous basis. But even on those lots RVs cannot be used as a permanent residence. Look at section 2.9b of the covenants to determine if your lot qualifies.
- ⇒ Can I rent out my RV? No. Covenant 2.9a.2 does not allow commercial use of RVs.
- ⇒ I am building a house. Can I live in my RV while building? Yes, but you must adhere to the rules in covenant 2.9a.5. You must show proof of your county building permit, you must be actively and continuously building, you must have septic and water connections available and in use, and you must get a construction permit from the office. Permits are good for one year.
- ⇒ Does a construction trailer count as an RV? It depends. If it looks like an RV and acts like an RV, then yes. If it is a car carrier, POD, flatbed trailer or similar then no.
- ⇒ Do boats, campers, park models or motorhomes count as RVs? Yes.
- ⇒ Can I have more than one RV on my lot? County Land Use ordinance 153 takes precedent over Surfside covenants in this case. The county allows one RV for every 2500 square feet of property for periods of time not exceeding seven consecutive days. [Read section 21.I of the ordinance](#) for more information.

Supply chain issues impacting PUD No. 2

As is the case with many other PUDs and businesses alike, the District is seeing lead times up to two and a half (2 1/2) years and prices abnormally high for materials compared to recent years. Due to this and the demand in Pacific County, the engineering department will be letting customers whose job requires a new transformer know that service may not be available when they are ready to be connected. Customers can have their fees refunded or be put on a waiting list to be connected on a first come, first serve basis. For those planning on building or applying for new service, it is recommended that you get your application in early in the process and be sure you have met all requirements from the District and received an approved L & I inspection, The District is doing all they can to temporarily relieve this issue with limited success. Hopefully, the situation will improve soon.

3 WAYS TO THAW A TURKEY

While frozen, a turkey is safe indefinitely. As soon as it begins to thaw, bacteria that may have been present before freezing will begin to grow again. Here are three ways to safely thaw your bird:

Refrigerator:
Safe to store the turkey for another 1 - 2 days in the refrigerator.
This is the USDA recommended thawing method.
How to thaw:
Allow approximately 24 hrs. for every 4-5lbs of bird.



Cold water:
Cook immediately after thawing.
How to thaw:
Submerge the bird in cold water & change every 30 mins.



Microwave:
Cook immediately after thawing.
How to thaw:
Use defrost function based on weight



DID YOU KNOW?
It's safe to cook a frozen turkey though cooking time will be 50% longer!
For more information on safe thawing methods, visit fsis.usda.gov



USDA
United States Department of Agriculture
USDA IS AN EQUAL OPPORTUNITY PROVIDER AND EMPLOYER

POLITICAL YARD SIGNS

Now that the mid-term elections are over, all political yard signs need to be removed by November 18th. Section 2.8 of the restrictive covenants states, "Political issue and candidate signs are permitted on a temporary basis consistent with state and local regulations."

Washington WAC 468-66-050 says "After primary elections, temporary political campaign signs endorsing a successful candidate may remain up to 10 (ten) days after the succeeding general election."

Water Shut Off Service

If you need your water shut off for the season, you can give us a call during business hours and request a member of our water department staff to come to your house or lot and shut off your water at the meter. This service is **free of charge** and helps prevent water main breaks. Give the business office a call at 360-665-4171.



Water meter shut-off keys for sale in the Business Office.

A Message from the Emergency Management Committee

There is space available in the storage shed for emergency caches. If you are interested in learning more about storing an emergency cache for you and your family, call Louise Purdin at (352) 586-0082.

Storage fees are \$10 per year. Images of approved containers for the EMC storage shed are below. If you are interested in purchasing them, you can find them at Home Depot.



Help! It's an emergency.

The Emergency Management Committee needs volunteers to support Surfside's emergency response plans. They meet at 1 p.m. on the last Tuesday of every month.

Please contact the office at office@surfsideonline.org if you need additional information or would like to join. Thank you.



Clark Conservation District 2023 Native Plant Sale



Ordering is opening soon!

When does the sale start?

**November 30th,
2022 at 4pm**

How do I order plants?

1. Order online
2. Select a pickup time
3. Pickup Feb 18, 2023

Where can I learn more?

**to learn more &
order plants visit
clarkcd.org/native-plant-sale**



Peninsula Arts Association presents the

FALL ARTISAN TOUR

November 25-26, 2022

10 a.m. to 4 p.m.

See the beauty of the peninsula and discover the many talents of our artistic members! Art studios are open up and down the peninsula through Long Beach, Ocean Park and Surfside

Maps are available to download at www.beachartist.org, or to pick up at BOLD Gallery, Bay Avenue Gallery, and the visitors center in Seaview.

The Community Relations Committee is sponsoring



a Holiday Wreath Making Class

Saturday, December 3rd, at 10 AM

Basket Case Nursery

12106 Sandridge Rd, Long Beach

Surfside Members - \$20

Guest of Surfside Member - \$45

Space is limited to 10. Call now to reserve your seat 360-665-4171.

~ First Annual ~

Shoebboxes of Joy

Mini Tree Auction and Holiday Bazaar

Saturday, November 26th

11 am to 4 pm

Upstairs at the Salt Hotel & Pub

on the waterfront at the Port of Ilwaco

shoebboxesofjoy@gmail.com, 360-642-1105



Trees painted by local artisans

NOXIOUS WEED DISPOSAL



Gorse (*Ulex Europaeus*)



Scotch Broom (*Cytisus scoparius*)



Tansy Ragwort (*Senecio jacobaea*)

Excerpted from the Washington State Noxious Weed Control Board Website

Now that you've done the work to remove noxious weeds like Scotch Broom and Tansy Ragwort, how do you dispose of the material? Good question! Our Washington State and Pacific County Noxious Weed Control Boards have answers. A few dos and don'ts to consider:

- ◇ Conduct as much noxious weed control before plants flower and develop seed. If you do this earlier in the season, before the plants are finished growing, there will be less plant material to manage/dispose of.
- ◇ Is composting an option? It is not recommended. Most home compost piles do not get hot enough to kill seeds or plants. This is especially important—do not compost toxic plants! Roots, stems, and leaf parts of noxious weeds can develop roots and sprout new plants which can escape compost piles and spread into natural areas.
- ◇ A general technique for dealing with noxious weed debris is to place them in a sealed bag, or cover them up securely for transport so nothing escapes as you travel. The Peninsula Sanitation Transfer Station accepts noxious weed debris at their normal rate, a minimum of \$25 for up to 320lbs. These prices are current as of 11/1/2022.
- ◇ When transporting noxious weeds in a an open truck bed or trailer, please make sure the material is covered securely so nothing escapes during transport. When done, clean the vehicle and any equipment used, including your shoes, gloves, and clothing to prevent spreading seed and vegetative parts.

*** More detailed information can be found at <http://www.pcweeds.org/common->



FORT GEORGE
BREWERY + PUBLIC HOUSE
ASTORIA, OREGON



BENEFIT NIGHT
TUESDAY, NOVEMBER 29th

RAISING FUNDS FOR SOUTH PACIFIC COUNTY HUMANE SOCIETY

SOUTH PACIFIC COUNTY HUMANE SOCIETY
Community Funded • Long Beach, WA

FortGeorgeToGo.com



GIVE LOVE TO ANIMALS THIS #GIVINGTUESDAY



3 ways to give

November 29, 2022

GIVING TUESDAY

1. Donate online
2. Mail to PO Box 101
Long Beach WA 98631
3. Drop your donation at the shelter during open hours
Tuesday - Saturday
11:00 am to 3:00 pm

SOUTH PACIFIC COUNTY HUMANE SOCIETY PRESENTS: BEACH PETS TREASURE HUNT ONLINE AUCTION

ARE YE READY TO HUNT FOR SOME TREASURE?



auctria.events/HUNT



Hunt yer treasure BETWEEN: 11/21 at 12:00PM and 11/27 at 7PM

FIND yer PERFECT LOOT!

Upcoming Events

- * November 19th, Budget Ratification Meeting, 9 a.m., Peninsula Senior Activity Center
- * November 28th, Fire Evacuation Meeting, 2 p.m.
- * December 1st, Neighborhood Watch, 2 p.m.
- * December 3rd, Wreath Making Class, Basket Case Nursery, 10 a.m.
- * December 8th, CPR Training, Business Office, 1 p.m., Registration Required



Movie and PJ Party—**Neptune Theater**

The Polar Express

Friday, November 25, 2022

10:30 am & 1:00 pm showings

Santa Sunset 5K run - 4 pm

Reindeer Trot - 4:30 pm

Friday, November 25th

(half mile fun run into the sunset)

The Arch at Bolstad Beach approach



Puppet Show

Veterans Field Stage

“Rudolph and the Dreidel”

Saturday, November 26th

11 am & 1 pm

Santa Claus

is coming to town!

Veterans Field Stage

Saturday, November 26th,

3 pm & 5 pm

Tree Lighting & Christmas Caroling

Saturday, November 26th, 6 pm



*in the park next to
Castaways Seafood
Grille*

Holiday Mermaid is coming
to meet you!

Sunday, November 27th

12 to 2 pm

Veterans Field Stage



Presenting the Bay Side Singers in "Sing On"

- * December 3rd, 2:00 p.m. at the Ocean Beach Lutheran Church
24002 U Street, Ocean Park
- * December 10th, 2:00 p.m. at the River City Playhouse
127 Lake Street SE, Ilwaco



Refreshments and Bake Sale

Donations accepted

NOVEMBER 25 - 27, 2022

Long Beach
Merchants Association

Holidays at the Beach



Photos with Santa * Puppet Shows
 Holiday Mermaid * Tree Lighting * 5K Run
 Reindeer Trot * Canned Food Drive

Please bring canned food donations to any/all events to help stock our local food banks

Presented by Long Beach Merchants Association and City of Long Beach

FOLLOW US ON FACEBOOK!

facebook.com/HATBLongBeachWA/



Christmas Concert

A WATER MUSIC SOCIETY EVENT

Proceeds benefit the music programs in our local schools.

**GEORGE MITCHELL
QUINTET
with
MARILYN
KELLER**

SUNDAY, DECEMBER 4
CHINOOK SCHOOL
EVENT CENTER, \$15
SOCIAL HOUR 2PM
CONCERT 3PM

*Welcome the holidays
with magical, jazzy
melodies of the season!*

*Holiday treats.
No-host champagne bar.
Festive venue!*

TICKETS & INFO
WATERMUSICSOCIETY.COM
OR AT THE DOOR

ARCHITECTURAL COMMITTEE

Plan on installing a fence, a shed, a gazebo or building a garage or a house?

REMINDER...

ALL building plans must be submitted to the Architectural Committee prior to any construction.

Pacific County will not approve permitting until the committee has signed off on all plans.

The committee meets every Tuesdays at 9 a.m. at the business office. The building packets are on our website at surfsideonline.org/forms/ or you can pick them up from the business office. Applications must be received by end of day on Thursdays to make the agenda for the following Tuesday's meeting.

Please notify the business office if you want to attend the meeting in person.

If you are building on a vacant lot without an address, please post a sign so the committee knows which lot will be developed.

Two (2) sets of plans must be submitted to the committee. Once approved, you will get a copy of the approved plan. Take it to the county for their approval as needed. Surfside will retain one set of approved plans to keep on file.

For more detailed information on the Architectural Committee duties and guidelines go to our website surfsideonline.org, select the Other tab, then Governing Documents. Download the Operations Manual and the Surfside Restrictive Covenants or call the business office 360-665-4171 with questions.

Thank you!

November 2022

SUN	MON	TUES	WED	THURS	FRI	SAT
		1 AC 9 am CRC 1 pm	2	3 Neighborhood Watch 2 pm	4 TBVN 1-3:30 pm	5
6	7 Election Cmte 9 am Special Board Mtg 3 pm	8 AC 9 am	9	10 LB&W 9 am WSP 11 am	11 Office closed 	
13	14	15 AC 9 am	16	17 Coffee with Trustees 2 pm	18	19 Board Mtg 9 am Budget Ratification Peninsula Senior Center
20	21	22 AC 9 am EMC 1 pm	23	24 Office closed 	26	
27	28 Election Cmte 9—11 am Fire Evacuation Meeting 2 pm	29 AC 9 am	30 S&S 3 pm			




LEGEND

AC=Architectural CRC=Community Relations EMC=Emergency Management

LB&W=Land, Buildings and Waterways S&S=Safety and Security

TBVN=Tree, Brush, Vegetation and Noxious Weeds WSP=Water Systems Planning

December 2022

SUN	MON	TUES	WED	THURS	FRI	SAT
				1 Neighborhood Watch 2 pm	2 No TBVN Mtg	3
4	5 Auditor 8—4 pm	6 AC 9 am CRC 1 pm	7	8 LB&W 9 am	9	10
11	12	13 AC 9 am	14	15	16	17
18	19	20 AC 9 am	21	22 S&S 3 pm	23 Office Closed 	24
25 	26 Office Closed	27 AC 9 am No EMC Mtg	28	29	30	31
January 1 	2 Office Closed	3 AC 9 am	4	5	6	7

LEGEND

AC=Architectural CRC=Community Relations EMC=Emergency Management

LB&W=Land, Buildings and Waterways S&S=Safety and Security

TBVN=Tree, Brush, Vegetation and Noxious Weeds WSP=Water Systems Planning