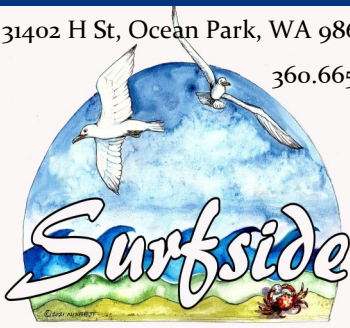


31402 H St, Ocean Park, WA 98640

360.665.4171



# Weekender

January 13, 2023

## 3 pitfalls of planting seeds too early

Surfside Events

Peninsula Events

Entertainment/News

[surfsideonline.org](http://surfsideonline.org)

- 1) **Too little light** – Those who rely on a sunny windowsill to start their seeds would be wise to wait a little longer for seed sowing. Most plants need at least 10 hours of light in order to grow well, and in January, much of the Northern Hemisphere receives less than that. In my Nova Scotia garden, I only get about nine hours of light in early to mid-January. Too little light results in leggy, spindly seedlings, which will never make good garden plants
- 2) **An indoor jungle** – For grow-light gardeners, lack of light isn't a problem; as long as the light bulbs are hanging only about 3 inches above the plants. And, adequate light will eliminate the leggy factor and help produce sturdy, well branched seedlings. But, starting your seeds too soon can still be a problem. How? Seeds sown too early will result in bigger plants...which then need to be potted up into bigger containers...which will quickly take over your seed starting area/house and cost you more money in potting soil, organic fertilizer and pots. Plus, you'll need to be on top of watering, as those sizeable seedlings will need more frequent irrigation.
- 3) **Big plants can bolt** – And those big plants in the big pots? Well, they can think that they've reached maturity and start producing flowers and fruits while still inside your house. In the case of tomatoes, you may think this gives you an awesome head start to a homegrown harvest, but this is not the case. Tomato plants grow and yield best when they are transplanted before they begin to flower, 6 to 8 weeks from sowing seed. I start my tomatoes in mid-March, for mid-May transplanting. Bolting can also adversely affect other types of seedlings like broccoli, cabbage, cauliflower, squash, cucumbers, and pumpkins. This will reduce or eliminate your harvest, not hasten it.



So, if planting seeds too early is bad, when should you start your vegetable, herb and flower seeds? Refer to the seed packet, catalogue or company website. They should offer accurate advice on when to sow seeds for each type of plant. You can also find an excellent [seed starting calculator here](https://savvygardening.com/3-pitfalls-of-planting-seeds-too-early/). Just enter your last average frost date and it will tell you when to seed indoors.

by Niki Jabbour, Savvy Gardening: <https://savvygardening.com/3-pitfalls-of-planting-seeds-too-early/>; Extracted 01-11-23

|                                       |    |
|---------------------------------------|----|
| Coffee Talk / Outfall Update          | 2  |
| Blackouts / Member Benefits           | 3  |
| New Year's Resolutions                | 4  |
| Updates / Upcoming Events             | 5  |
| Notices                               | 6  |
| Fishing Derby Help / Beach Debris     | 7  |
| Covenant Corner                       | 8  |
| Insight for Elders / Filling Sandbags | 9  |
| Hospital Health Events                | 10 |
| Speaker Series / Game Night           | 11 |
| AC Committee                          | 12 |
| Zoom Links / Hyper-Reach              | 13 |
| January Calendar                      | 14 |
| February Calendar                     | 15 |

**Pacific County is limiting the use of the 315th bridge between I and H Streets. They will temporarily replace rotted wooden boards with a steel plate until the bridge can be fully repaired. Please, no vehicles over 7,500 lbs. Go around the bridge at 300th Street to H Street from the south and 338th Place to G Street from the north. Thank you.**



With your trustees Dan Neptun and John Curran  
2 p.m. on January 27th at the business office

### Outfall Updates

Are you wondering why the canal and Seabreeze Lake water levels are so high? All the recent storms pushed large amounts of debris (sand, logs, vegetation) toward the shore and the outfall gates become blocked. The south outfall is located at 328th and G Street and the north outfall is located at 350th and G Street. Pacific

County was at both outfalls several times over the last few weeks to clear the debris but the continued storms mean more debris is

push debris back to shore blocking the gates. Pacific County will continue to clear both outfalls as much as necessary over the next few days and the water levels will start to drop.



## A message from the PUD...

"Currently, we are only able to update the PUD'S Facebook page for outages. I know it can be frustrating and time consuming getting through the telephone lines, and that not everyone has a Facebook account. Until we can implement another source, the best thing to do is call your local office or check Facebook. The PUD's Facebook page is accessible to everyone, not just those that have Facebook profiles. Customers that do not have Facebook, but have internet, can do a quick search for the Facebook page and see the District's posts about outages."



<https://www.facebook.com/PacificPUD>

For immediate questions, concerns & outage reporting please call your local office at 360-642-3191.

## Benefits Surfside HOA Members Receive

- Clean and plentiful water (up to 5,000 cf per month per meter)
- Disposal of household garbage and recycling (compactor located at 324th and T Street)
- Secure, accessible, and low cost RV storage (\$200 a year for non-powered and \$400 for powered).
- Several cabanas with BBQs and restrooms (first come, first served)
- An enclosed meeting room with audio/visual equipment for presentations (max occupancy 45)
- Well maintained and accessible pedestrian paths to the beach
- Multiple, convenient dog waste receptacles
- The canal and Seabreeze Lake regularly stocked with fish
- Business services, including free notary and internet, and low cost faxing and copying
- Free water shut-off/turn-on services during the winter months
- A weekly newsletter with educational articles, timely updates, and area event notices
- Three AEDs (automated external defibrillator) located at the business office, the compactor and the well field
- A chipping site for yard debris in the summer; free mulch in the fall
- Reverse 911 notifications in emergencies
- A fenced playground and park
- An annual Fishing Derby
- An annual golf tournament in June (a scholarships fundraiser)
- Many community-based social and charitable events and activities
- Opportunities to serve the community through volunteerism



# [The Psychology Behind Why New Year's Resolutions Fail](#)

by Cynthia Vinney

(This is a shortened excerpt, read the full article for quotes and citations by clicking the title above.)

## We're Thinking Too Big

One of the biggest issues with [New Year's resolutions](#) is that they often revolve around huge changes like adjusting our [eating habits](#), getting more sleep, or becoming fluent in a new language. If we want to be able to meet our goal of, say, learning a language, we need to [set smaller goals](#) along the way to be successful, like devoting five minutes a day to learning a new word or phrase. That way we can ease ourselves into the change, instead of making an overwhelming change that we probably can't sustain like planning to be fluent in the new language in four months.



## We Aren't Asking Why

Many of our resolutions tend to involve things we feel we should do. But when we focus on what we should do, we're not focusing on what's in it for us. One way we're more likely to change is to get at the heart of our internal reason for wanting to. For example, if our resolution is to go to the gym three times a week but we hate going to the gym, we won't meet our goal. Instead, we need to know our personal reasons for [our goal](#). If we know the reason we're making a particular resolution, we may find there are other routes to achieving it that will be more enjoyable and satisfying for us and, therefore, make us more likely to stick with it over the long term.

## We Aren't Ready to Change

Another reason we can't commit to our New Year's resolutions long-term is that we aren't ready to change. The [Stages of Change](#) model is a way to understand the process people go through before they're psychologically ready to change. The model consists of:

- **Precontemplation:** You're starting to become aware that there may be something to change
- **Contemplation:** You're thinking about making a change
- **Preparation:** You start putting a plan together to make a change
- **Action:** You make the change
- **Maintenance:** You determine how to maintain the change

People who stick with their New Year's resolutions are likely at the **Action** stage when they make their resolution, while those that fail are not. This indicates that people who make New Year's resolutions on a whim are unlikely to succeed. Instead, a certain amount of thought and psychological—and possibly physical—preparation and planning has to go into a New Year's resolution in order to sustain it.

## Creating Lasting Change

When we set big, overwhelming New Year's resolutions, we also set up the expectation that we're going to turn over an entirely new leaf on January 1. But [real change](#) requires incremental changes so we can make ourselves comfortable with the change and ensure the change becomes habitual. Instead of setting one big New Year's resolution that people may quickly come to believe is unattainable, create a timeline for the next year that sets a variety of small milestones that will help us get to a bigger goal over time.

From verywellmind, <https://www.verywellmind.com/why-new-years-resolutions-fail-6823972>; Extracted 01/05/23

## Land, Buildings and Waterways Update

The committee had a special meeting on December 8, 2022 to discuss strategies for Surfside waterways, including treatments for Seabreeze Lake and the canal. They made several motions and are bringing forward a recommendation to the Board of Trustees to consider at their January meeting. To read the full minutes of the meeting, please go to our website. From the Committees tab, go to Land, Buildings and Waterways Committee, then scroll down to 2022 Committee Minutes and select the [Land, Building and Waterways Special Meeting, December 8, 2022 link](#).

## Website Updates

There were several small updates to the Surfside HOA website recently, including rotating pictures captured by members on the landing page, updates to the FAQ page, adding a page to the Other tab so members can easily access Zoom links for all regularly scheduled meetings, and posting the full special meeting minutes from the Land, Building and Waterways committee on their page. Look for more changes as the year progresses.

The Business Office

## Peninsula's Got Talent

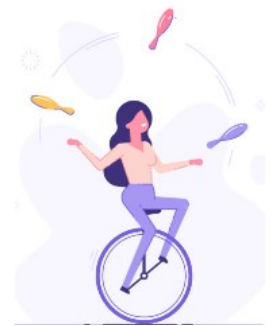
January 27 @ 6:00 pm - 8:00 pm

### Sign Up AT THE JETTY!

We want YOU! On January 27th, we're hosting a special talent show at The Jetty! This show is open to anyone 21 years or older. We're looking for all talents, musicians, singers, dancers, rappers, actors, comedians, magicians, and more!

Sign up at North Jetty Brewing while we're open, then plan to WOW our Jetty Judges for a chance to WIN cash, prizes and Jetty swag!

- ◇ 1st Place – \$100 and Jetty swag
- ◇ 2nd Place – \$50 and Jetty swag
- ◇ 3rd Place – Jetty swag basket



## Upcoming Events

- January 26th, 6 p.m., Game Night, Boardroom, please RSVP, 360-665-4171
- January 27th, 2 p.m., Coffee Talk with Trustees, Boardroom
- February 23rd, 1 p.m., Speaker Series, Peninsula Wild Care
- March 17th, 10 a.m. and March 19th, 4:00 pm -Peninsula Quilt Guild Quilt Show

## Tree, Brush, Vegetation and Noxious Weeds (TBVN) Related Violations

If you receive a letter from the TBVN committee regarding your trees or noxious weeds and have questions, please call their direct line at 360-783-1510. You may also email them directly at [TBVNChair@surfsideonline.org](mailto:TBVNChair@surfsideonline.org). If you call the business office please select option 7 to be forwarded to their direct line.



The office and the HOA Compliance Coordinator do not have any information on the status of TBVN related violations. All communication and tracking of issues is done by TBVN. If you call the office requesting information you will be forwarded.

Thank you

## NOTICE—Water Emergency Numbers

**During business hours, 8:30 a.m. to 4:00 p.m., call the office at 360-665-4171.**

**After business hours, 4:00 p.m. to 8:30 a.m., call 360-783-2426.**



### 2023 Dues and Assessments

The 2023 billing statements were mailed out last month. If you have not received your statement, please contact the business office to ensure we have your correct mailing address.

If you make a payment in full before February 28, 2023 no service charges are added. However, beginning March 1, 2023, a 1% service charge is applied to outstanding balances. Statements are sent out monthly until your balance is paid in full.

Call the office with any questions, 360-665-4171.

## 2023 Compactor Passes

Your 2022 compactor pass is good through March 1, 2023. You will need a new 2023 pass after March 1st.

You can pick up a new pass at the business office. If you cannot make it to the office during regular business hours (8:30 a.m. to 4:00 p.m.) please call or email and we will set up an after hours pick up for you.

Phone: 360-665-4171

Email: [office@surfsideonline.org](mailto:office@surfsideonline.org)

**YOU MUST SHOW YOUR COMPACTOR PASS TO THE ATTENDANT.**

## 2023 Fishing Derby



This year, our Fishing Derby Chair, DuWayne Mott, told us he will not have time to oversee and run the Fishing Derby. This is an annual event, usually on Memorial Day weekend, that kicks-off the Surfside fishing season. The fishing derby typically sees the largest member turnout for any Surfside event (second only to the annual members meeting). We are hoping **a few volunteers** will step forward to host this event for the children. If you or someone you know would be interested please give us a call at 360-665-4171.

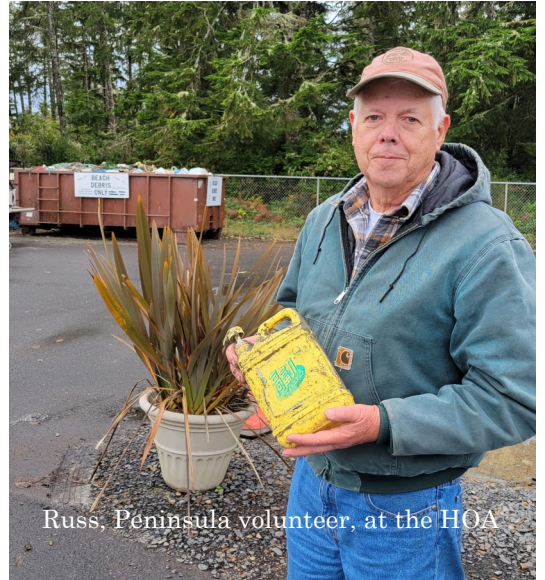
### Peninsula Volunteer and Surfside Member Russ Lewis, talks about beach debris...

I started cleaning the beach as a volunteer for the Willapa National Wildlife Refuge from the Oysterville Approach beginning in June 2012 and have been doing it ever since. I'm still a refuge volunteer which enables me to pick the beach clean of trash/debris all the way up to Leadbetter Point. I am grateful to have had assistance over the years by other volunteers who work Surfside and points south. Early on I coordinated with Surfside Homeowners Association, who graciously allowed me to establish a 20 cubic yard dumpster at the compactor site for anyone who collects trash/debris off the beach. **Only marine debris and trash collected from off the beach should go into the dumpster.**

Funding of this dumpster is coordinated with Willapa National Wildlife Refuge, Washington State Department of Ecology, Grass Roots Garbage Gang and for the past three years through a grant from NOAA. I track the weight and cost of the dumpster per grant requirements. **Surfside membership monies do not pay for any part of this dumpster**, but we are very appreciative it can be situated at the HOA's secured compactor site.

Since 2012 marine scientists from Hatfield Marine Science Center in Newport, Oregon have studied the dumpster contents, including weight and identification of hitchhiking marine specimens from long range trash/debris. Hatfield also studied potential Japanese Tsunami Marine Debris when it was washing ashore. Scientists have made subsequent visits to document beached debris with attached marine species. We have been averaging over 7 tons of trash/debris collected and removed off our shoreline per year since 2012; around 85 total tons since we began.

I want to let everyone know Vern is doing a great job of running the compactor site with cheerfulness, fairness and attention to detail. The site itself has never looked so clean and orderly. There are times when members insist on dumping household debris into the beach dumpster claiming it came from the beach; but we know from experience it did not, especially when it has pine needles and garden snails stuck to it. I often go into the dumpster to pull out bootlegged stuff I know doesn't belong. Hats off to Vern, Paul and Chuck!



Russ, Peninsula volunteer, at the HOA

## Who ya gonna call?

# Covenant Corner

The business office fields lots of phone calls and in-person questions about the HOA covenants, the majority of which we handle efficiently and with good humor. But sometimes we get questions we have to pass on to other county or state entities. Here is a short list of who to call when your question relates to an issue outside of our restrictive covenants.

- ◇ **Trespassing**—If someone is accidentally or purposefully accessing your lot from the street or from the beach, call the **Sheriff's non-emergency number** and report it, **360-642-9397**.
- ◇ **Drug sales or drug use**—if you have suspicions there are drug deals happening in your neighborhood or you have evidence of blatant drug use, contact the **Pacific County Drug Task Force** and report it. The south tip line is **360-642-9300 x 2847** and their email is [dtf@co.pacific.wa.us](mailto:dtf@co.pacific.wa.us).
- ◇ **Vehicular accidents/road hazards**—if you witness an accident or erratic driving, or there are unmarked road hazards, yep, you guessed it, call the **Sheriff's non-emergency number**.
- ◇ **Smoke/Fire**—If you question the size of an open burn pit or campfire, contact the **Fire Department's non-emergency number (360) 665-4451**.
- ◇ **Vehicles parked on the roadside**—depending on your neighborhood the county may own up to 60' of "roadway", both the asphalt and the utility right of way. If there is an *unknown* vehicle parked on the side of the road for more than a week and it does not belong to your neighbor or a guest, [send a comment/concern form](#) to **Pacific County Code Enforcement**.
- ◇ **Illegal dumping**—take photos and notate the correct location and if visible, address of the lot, then [send a concern form](#) to **Pacific County Code Enforcement**.
- ◇ **Septic failures**—you might want to call your neighbor first, but then [send a concern form](#) to **Pacific County Code Enforcement**.
- ◇ **Dead Wildlife**—this depends on where the animal is located. If there is a dead animal on your property you are responsible for dealing with it. If the animal is in the roadway or the right of way, you can call **Pacific County Dispatch, 360-875-9397**. If the animal is on the **beach** call **360-642-9397**.
- ◇ **Dangerous Wildlife**—not all injured animals are dangerous and unfortunately, the deer in our community are in conflict with vehicles frequently. If there is a dangerous situation, like an injured bear or coyote, call the **Department of Fish and Wildlife Enforcement, 360-902-2936, Option 1**.
- ◇ **Injured Wildlife**—there are some local rescue groups whose information you can find online. You may also [submit an "observation"](#) to the **Department of Fish and Wildlife**.
- ◇ **Feeding Bears**—it is *illegal* to feed bears. If you witness this occurring call the **Department of Fish and Wildlife Enforcement, 360-902-2936, Option 1**. It is not illegal to feed deer, raccoons, etc. but it is unhealthy and potentially life threatening for wild animals to consume human food.

Pacific County Sheriff's Office, Non-Emergency Number: 360-642-9397 (staffed 24 hours a day)

Pacific County Drug Task Force: 360-642-9300 x 2847

Pacific County Fire District 1, Non-Emergency Number: 360-665-4451

Department of Fish and Wildlife, Montesano Regional Office, Non-Emergency Number: 360-249-4628

Department of Fish and Wildlife Enforcement, 360-902-2936, Option 1.

Pacific County Dispatch, 360-875-9397



## INSIGHT FOR ELDERERS—FAMILY GENEALOGY

Date: Wednesday, January 25, 2023, 2:00 to 4:00 pm

Presented by: Sandi Melvin

Location: Oysterville Schoolhouse, 3322 School Road, Oysterville

Let history come alive as you explore your own family's link to monumental events of the past. Sandi will pass on tips from years of her own research and explore some factors that might motivate you to become a passionate researcher. She will share ideas about how to get started or to overcome brick walls you may have already encountered. Have you ever pondered where or how your great-great grandparents lived or how their medical history might affect you?

Genealogy may help you uncover circumstances of their day-to-day lives, open doors to their relationships, status, possessions, professions, experiences, and possibly actual old photos; through wills, deeds, census data, and other valued archives. To properly build a family tree you need to know physical places to search, as well as how to search online. You need to know what data to trust, how to uncover obscure facts, issues with online genealogy programs, how to use DNA, and the value of family lore.

Sandra (Sandi) Melvin has lived the majority of her life on the Columbia River and the Long Beach Peninsula, however, she spent 18 years in the oil fields of Southeast Texas as a professional genealogical researcher searching for the rightful owners of mineral rights for various oil companies. She has served as president of the Clatsop County Genealogical Society, president of the Long Beach Genealogical Society, and numerous other historical societies and heritage museums.

The Mission Statement of INSIGHT FOR ELDERERS is to provide opportunity for continued learning for seniors through lectures and discussions on critical topics relevant to their physical, mental and emotional wellbeing. Subjects will include local ecology and geology, legal and financial advice for seniors, habits for living well, recreational opportunities, death and dying, living with pain, and much more. We are hoping these lectures will provide for rousing discussion and opportunities to form a better community. For more information contact Anthony Pfannenstiel at [Tonypfan@aol.com](mailto:Tonypfan@aol.com).



### FILLING SANDBAGS...MADE EASY

Filling sandbags is often an arduous, tedious task but no more! The Emergency Management Committee purchased an *ExpressBagger®* to simplify the task.

**Sand bags are available at the HOA business office.** Call (360) 665-4171 or email [office@surfsideonline.org](mailto:office@surfsideonline.org) for more information.

Sand and the *ExpressBagger®* are located at the gravel pit at 315th and G Street. The bagger is behind the cement wall. Simply move the bagger next to the sandpile and begin filling your bags. Please return the bagger to its nesting spot behind the cement wall when finished. You can [watch this video](#) on how to use the bagger. Be prepared and stay safe!





# HEALTHY LIVING WITH DIABETES!

**Come learn about how diabetes self-management can help you live a long, healthy life.**

Do Well, Be Well Diabetes Classes  
10:00AM - 12:00PM, Thursdays  
Jan 5, 12, 19, 26  
OBH Diabetes Education Room

Classes are taught by a Certified Diabetes Care and Education Specialist

Call 360-642-6308 to learn more. (reservations by referral only)



Ask your provider about a referral to OBHMC



Ocean Beach Hospital and Medical Clinics Presents:

# WEIGH-IN 2023



## Are you ready to change your life?

Learn how to eat healthy, be active, and manage stress to **LOSE WEIGHT** and prevent disease with the **FREE year-long program!** Find the support you need here to take the plunge and weigh in!

**YOU could WIN prizes in merchandise and gift cards for meeting program goals**

**LOSE WEIGHT, WIN BIG!**

## Welcome Session Tuesday, Jan 17

10:00 - 11:00 AM  
Ocean Beach Hospital Education room  
For more information, call Molly at 360-642-6308  
<https://www.eventbrite.com/e/weigh-in-2023-tickets>



# A Koffee Hour SPECIAL EVENT!

## "Understanding Food Labels"

**January 18, 2023**  
**1:00 - 2:15**

**Ocean Park Lutheran Church**

**Come learn about how to use nutrition facts labels to help make healthy food choices**

**Bring a food label and join us!**

Peace Of Mind Pacific County invites you to join the Wednesday Koffee Hour group for guest speaker, **Andy Lakanen**, Registered Dietitian



A Peace of Mind Pacific County activity  
[www.pompc.org](http://www.pompc.org) info@pompc.org  
360.642.3448



*"Caregiving often calls us to lean into love we didn't know possible." \**

# Caregiver Support Group

The Caregiver support group meets the **first Thursday of every month** and offers a safe place to discuss the stresses, challenges, and rewards of providing care for a love one.

All are welcome; share your experience, advice, and support to other caregivers.

Light snacks will be provided.

First Thursday of the month  
1:00 - 2:00  
Naselle Clinic  
Contact: 360-642-6330  
rcassidy@oceanbeachhospital.com



\* Tina Walker, *The Inspired Caregiver: Finding Joy While Caring for Those you Love*

The Community Relations Committee presents...

**Reva from Peninsula Wild Care**  
**Thursday, February 23rd at 1 p.m. at the business office**

Reva has been involved in wildlife rehab for the past nine years. She opened Peninsula Wild Care (PWC) in February 2021. She has her state rehabilitation license. Reva is *not* with the Department of Fish and Wildlife; PWC is a small nonprofit wildlife rehabilitation center here in Ocean Park.

Peninsula Wild Care rescues Washington wildlife from life threatening situations. They provide care, veterinary medical treatment as needed, and assist orphaned, wild animals. Their mission is to reintroduce previously injured and orphaned wild animals back into their natural habitat and to educate children and adults about the value of Washington wild animals and conservation.

PWC is a small non-profit, 501(c)(3), with an all volunteer staff. They serve Pacific and Wahkiakum Counties. They are permitted to rehabilitate small mammals and provide restricted care to most bird species. For more information go to <https://www.peninsulawildcare.org/> or call 360-947-3188.



Let's get together for game night!

**Thursday, January 26th at 6 p.m.**  
**in the business office boardroom**



Bring your favorite game or join in a round of bunco.  
 Coffee, tea and water are provided.  
**Please call 360-665-4171 to reserve your spot.**

# ARCHITECTURAL COMMITTEE

Plan on installing a fence, a shed, a gazebo or building a garage or a house?

REMINDER...

ALL building plans must be submitted to the Architectural Committee prior to any construction.

*Pacific County will not approve permitting until the committee has signed off on all plans.*

The committee meets every Tuesdays at 9 a.m. at the business office. The building packets are on our website at [surfsideonline.org/forms/](http://surfsideonline.org/forms/) or you can pick them up from the business office. Applications must be received by end of day on Thursdays to make the agenda for the following Tuesday's meeting.

**Please notify the business office if you want to attend the meeting in person.**

**If you are building on a vacant lot without an address, please post a sign so the committee knows which lot will be developed.**

**Two (2) sets of plans must be submitted to the committee.** Once approved, you will get a copy of the approved plan. Take it to the county for their approval as needed. Surfside will retain one set of approved plans to keep on file.

For more detailed information on the Architectural Committee duties and guidelines go to our website [surfsideonline.org](http://surfsideonline.org), select the Other tab, then Governing Documents. Download the Operations Manual and the Surfside Restrictive Covenants or call the business office 360-665-4171 with questions.

Thank you!

## Zoom Links for January 2023 Regular Meetings and Events

Jan 21, 2023, 8:30 AM, [Board of Trustees Regular Monthly Meeting, January 2023](#)

Meeting ID: 817 7183 2809, Passcode: 818665

Jan 26, 2023, 3-5 PM, [Safety and Security Regular Monthly Meeting, January 2023](#)

Meeting ID: 868 1750 6606, Passcode: 259138

Jan 31, 2023, 1-3 PM, [Emergency Management Regular Monthly Meeting, January 2023](#)

Meeting ID: 839 8667 8755, Passcode: 113711

## Going to the compactor? Don't forget your pass!

### Pacific County Emergency Notification System



Surfside uses this system to notify members of a water main break and boil water advisories. We also send a second notification through Hyper-Reach indicating when a boil water advisory has been lifted.

When signing up for Hyper-Reach make sure to select **Surfside** as your municipality, not Ocean Park or Long Beach. We do not send notices to any other locations. Also, if you would like to receive notifications regarding weather emergencies impacting our area, check the **weather alert box**.

Municipality (NOT Postal Address)

SURFSIDE

Street Name (Don't see your street?)

[Please Select]

House Number (as in 33 Main St)

Community Alerts




Weather Alerts  
More Info



You can sign up for Hyper-Reach at

<https://secure.hyper-reach.com/comsignupw.jsp?id=40685>

# January 2023

| SUN  | MON                | TUES   | WED | THURS  | FRI                                  | SAT                                 |
|--|--------------------|--|-----|--|--------------------------------------|-------------------------------------|
| 1<br> | 2<br>Office Closed | 3<br>AC 9 am<br>CRC 1 pm                             | 4   | 5<br>Neighborhood<br>Watch 2 pm                                  | 6<br>TBVN 1 pm                       | 7                                   |
| 8  | 9                  | 10<br>AC 9 am  | 11  | 12<br>LBW 9 am<br>WSP 11 am<br>Speaker series<br>Russ Lewis 2 pm | 13                                   | 14                                  |
| 15   | 16                 | 17<br>AC 9 am  | 18  | 19   | 20                                   | 21<br>Regular Board<br>Meeting 9 am |
| 22   | 23                 | 24<br>AC 9 am  | 25  | 26<br>SS 3 pm<br>Game Night<br>6 pm                              | 27<br>Coffee with<br>Trustees<br>2pm | 28                                  |
| 29   | 30                 | 31<br>AC 9 am<br>Elections<br>Cmte 10:30<br>EMC 1 pm |     |  |                                      |                                     |



## LEGEND

AC=Architectural    CRC=Community Relations    EMC=Emergency Management

LBW=Land, Buildings and Waterways    SS=Safety and Security

TBVN=Tree, Brush, Vegetation and Noxious Weeds    WSP=Water Systems Planning

# February 2023

| SUN  | MON | TUES   | WED                           | THURS  | FRI            | SAT                              |
|--|-----|--|-------------------------------|--|----------------|----------------------------------|
|  |     |  | 1                             | 2  | 3<br>TBVN 1 pm | 4                                |
| 5  | 6   | 7<br>AC 9 am<br>Elections<br>Cmte 10:30 am<br>CRC 1 pm   | 8                             | 9<br>LBW 9 am<br>WSP 11 am                       | 10             | 11                               |
| 12   | 13  | 14<br>AC 9 am<br> | 15                            | 16   | 17             | 18<br>Regular Board Meeting 9 am |
| 19<br><br>Office Closed | 20  | 21<br>AC 9 am  | 22<br>Fire Evac Planning 2 pm | 23<br>Speaker Series<br>Wildlife 1 pm<br>SS 3 pm | 24             | 25                               |
| 26   | 27  | 28<br>AC 9 am<br>EMC 1 pm  |                               |  |                |                                  |

## LEGEND

AC=Architectural    CRC=Community Relations    EMC=Emergency Management

LBW=Land, Buildings and Waterways    SS=Safety and Security

TBVN=Tree, Brush, Vegetation and Noxious Weeds    WSP=Water Systems Planning