

31402 H St., Ocean Park, WA 98640



Weekender

October 27, 2023

- Surfside Events
- Peninsula Events

Veterans Day	2
Covenant Corner	3
Holiday Trends in Décor	4
Safety & Security Cmte./ Secure your home	5
Grab n Go Kit/ Winter Driving	6
Hunting In Surfside	7
Yoga/Local Events	8
SPCHS Events/Free Mulch	9
Neighborhood Watch	10
Hyper reach sign up/Bears	11
Architectural Committee	12
October Calendar	13
November Calendar	14



2024 Budget Ratification

The annual 2024 Budget Ratification meeting is scheduled for Saturday, November 18, 2023, and will take place at the Peninsula Baptist Church.

The office is in the process of preparing the budget packet, which will be distributed next week.

However, please be aware that we are currently facing a staff shortage, which may result in limited resources and increased workload.

We sincerely appreciate the understanding and patience of our members during this demanding period.

Your Office Staff

VETERANS DAY

The Community Relations Committee kindly requests the participation of Surfside Veterans in submitting a photo, either current or during your military service, along with your branch of service and, if permissible, your rank. In recognition of your service, we will be hosting a modest ceremony at Veteran's Park and providing refreshments in the office afterwards on November 11, 2023. We look forward to honoring and celebrating your dedication and sacrifice.



Please send your photos to office@surfsideonline.org.

Board and Committee Meetings Links

To find the meeting links for Board Meetings and Committee Meetings just visit the website, by clicking [here](#).

To access the desired meeting, please navigate to the respective webpage and select the hyperlink associated with the target meeting. This action will promptly redirect you to the relevant gathering. When participating in these meetings, please ensure that your complete name is clearly visible. Additionally, we kindly request that you mute your phone and, if not actively engaged in conversation, deactivate your video. Lastly, please refrain from eating while on camera.

Thank you for your cooperation.



Recreational Vehicle Use

COVENANT CORNER

2.9a Provisions Applicable to RVs on All Surfside Lots - Recreational vehicles must be registered, licensed, and maintained in a mobile condition at all times, and shall only be used as specified herein.

A temporary Conditional Use Permit for each vehicle to be placed on a platted parcel must be obtained annually at the Association office.

These permits (decals and/or permits) must be prominently displayed and visible from the street.

2.9a.1 Conditional Use Permits shall be issued as follows: Summer occupancy, from March 15 through October 31, of a recreational vehicle is permitted as a temporary vacation/short term dwelling. It must display a current motor vehicle license and meet all health codes for temporary recreational use. One-time registration at the Surfside business office is required at the first visit each summer. A summer occupancy Conditional Use Permit OR a numbered registration decal will be issued. These shall be placed as stated in 2.9a above.

Winter occupancy, from November 1, through March 14, of a recreational vehicle is permitted as a temporary vacation/short term dwelling. It must display a current motor vehicle license and meet all health codes for temporary recreational use. **During winter visits, recreational vehicles must be occupied. Short term permits shall be issued from the Surfside business office for periods up to 21 days, not to exceed 60 days total, and shall be placed as stated in 2.9a above.**

1.3-"Recreational Vehicle" (RV) shall mean a vehicular type of portable structure without permanent foundation, which can be towed, hauled, or driven and is primarily designed as temporary living accommodation for recreational, camping and travel use and includes, but is not limited to, travel trailers, truck campers, camping trailers, and self-propelled motor homes. RV also includes boats and boat trailers. RV's must be licensed full time for road travel and must be in movable condition within one (1) hour.

Fires And Burning In Surfside

2.5 Outdoor burning of land clearing debris or construction debris is prohibited. Small (3-foot x 3 foot) campfires, cooking fires, and natural yard debris fires are permitted provided they meet the criteria for such uses adopted by the [Pacific County Fire District #1](#), and meet the requirements of Section 5.8.

5.8 Owners shall use their platted parcels in such a manner so as not to interfere with the health, safety, and comfort of other property owners. Intrusive lighting, noise, including loud, amplified music, boisterous parties, and **smoke from fires that unreasonably interferes with others' enjoyment of life and property are not permitted.**

Please call, the fire department to report any unattended fire or burning of any material that is not natural vegetation. 360-665-4451

*Holiday Trends in
Decor and Appetizers*



*Presented by Surfside Member Trina Kirkwood
Sponsored by the Community Relations Committee*

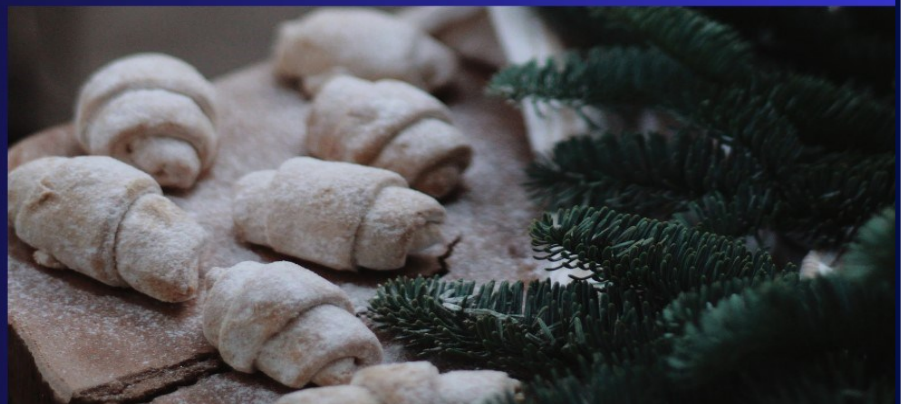
*November 15, 2023
2pm.
at the Surfside Office*

*RSVP by November 10th, space is
limited
360-665-4171*



Ugly Ornament Contest

*Bring a new, unwrapped ugly
Christmas ornament to
compete in contest. The ugly
ornament with most votes
wins!*



Safety & Security Committee

The committee kindly requests feedback from the members regarding the areas they would prefer the committee to focus on.

You can email your suggestions to Office@surfsideonline.org and we will forward your email to the committee.

If you would like to volunteer on this committee, you can email the request or come down to a committee meeting on the 3rd Thursday of the month at 3pm.

How to burglar proof your home FAQs

What is the best way to protect my house from burglars?

Protecting your house from burglars involves a combination of physical and behavioral strategies to deter potential intruders and enhance your home's security. For example, you can install security cameras, set up exterior lighting, place defensive plants, collaborate with neighbors, etc. But remember that no security measure is foolproof. You should assess your security needs and find the most effective methods.

Do burglars break in through doors or windows?

Yes. Doors and windows are the most common entry points for burglars. Statistics show that 34% of burglars use the front door when breaking into a home, and 23% get into a house through a first-floor window.

What type of houses do burglars avoid?

Houses in obvious locations, such as corner lots, have fewer possibilities of experiencing break-ins. And most burglars claimed that they would avoid homes with large dogs. Burglars will also avoid security cameras. Data shows that homes lacking a home security system have a three times higher burglary risk than homes with such a system.

How do burglars pick a house to enter?

Burglars choose homes with visible weaknesses, such as unlocked doors or windows, broken fences, or poorly lit exteriors. They also look for unoccupied targets, such as during vacations or when residents work. Moreover, homes without security systems or visible security measures are more attractive targets.

Implementing distinct security measures, like installing security cameras, placing defensive plants, or enhancing entry points to enhance home security, is essential. Nobody wants to become a victim of home invasions.

<https://reolink.com/blog/how-to-burglar-proof-your-home/>

Sourced 10/24/23

ATTENTION RV Storage Area

On Monday, October 9th, the RV Storage will be undergoing construction to upgrade the electrical spots. Please enter the storage area with caution. The project will last 2-3 weeks. You can leave your RV on your lot until the work is complete. We will let you know once the work has been completed.

We appreciate your patience. Thank you.

December 20, 2012

Hunting in Surfside

Director Phil Anderson has asked me to respond to your letter about deer hunting in Surfside, Washington. In short, hunting is legal in Pacific County, including Surfside, but the area west of Sand Ridge Road is a firearm-restricted area. Please allow me to explain:

The Washington State Legislature decided long ago that only the Washington Department of Fish and Wildlife (WDFW) has the authority to regulate the time, place, and manner of hunting and fishing in Washington. This authority is found in the Revised Code of Washington (RCW) 77.12.047. For firearms in general, the State of Washington is the sole regulatory entity; see RCW 9.41.290. What this means is that the State controls who can own, carry, and use firearms, and WDFW controls where, when, and how firearms can be used for hunting. Divisions of local government, which include cities, counties, towns, and other municipalities, can restrict the discharge of firearms within their boundaries, but only if there is a reasonable likelihood that humans, domestic animals, or property will be jeopardized. See RCW 9.41.300. Neither Pacific County nor the city of Ocean Park restrict the discharge of firearms. Homeowner's associations like Surfside cannot legally restrict the discharge of firearms or prohibit hunting on association property.

The Long Beach Peninsula, which is where Surfside is located, composes game management unit (GMU) 684 for deer hunting. However, WDFW has designated the pmi of GMU 684 that is west of Sand Ridge Road as a firearm-restricted area, because WDFW recognizes the danger in people discharging modern firearms there. "Modern firearms" means centerfire and rimfire rifles. In firearm-restricted areas, hunters are only allowed to hunt with bows and arrows, crossbows, muzzleloaders, revolver-type handguns meeting equipment restrictions, or legal shotguns firing slugs or buckshot. These types of weapons are safer to hunt with in heavily populated areas and on islands, peninsulas, and the like.

It is important to note that although hunting is allowed in GMU 684, no one is permitted anywhere in Washington State to recklessly engage in conduct that creates a substantial risk of death or serious physical injury to another person. So, if a person discharges a firearm or any type of weapon in a manner that no reasonable person would and that truly endangers the safety of others, that person is committing reckless endangerment. Reckless endangerment is a crime under RCW 9A.36.050. If you see a person who you think is committing this crime, you should immediately contact your local sheriff's department or local WDFW police officer to report the activity.

This letter was confirmed by Dan Chadwick, Fish and Wildlife Police, Captain Region 6, Montesano, Washington on October 18, 2023. The laws have not changed since 2012.

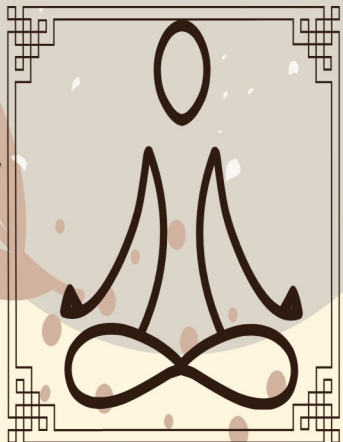
You can contact Captain Dan Chadwick at Dan.Chadwick@dfw.wa.gov for any additional questions.

**Washington Department of
Fish & Wildlife**



Surfside Chair Yoga/DanceClass

Please RSVP by Friday
360-665-4171



Space for 15 is
available

With Debbie Wells

The next Saturday Class will be October 21st at 2 pm
at the Surfside Board Room

Donations Welcome!



Uniquely Local Quality Crafts Holiday Gift Bazaar

21 one-of-a-kind vendors

Peninsula Church
Center
5000 N Place, Seaview

Friday and Saturday
November 3 and 4
10:00 - 3:00




Halloween Happenings Around Town

Visit
opwa.com/events

Ocean Park Area
CHAMBER OF COMMERCE

a step away from the crowds...




EASY ONLINE ORDERING!

Class of 2024 Fundraiser

POINSETTIAS
+
CHRISTMAS CACTUS

POINSETTIA \$20 OR \$18 IF YOU BUY 3 OR MORE
CACTUS \$12 OR \$10 IF YOU BUY 3 OR MORE



**PICKUP SATURDAY, NOVEMBER 26TH + SUNDAY,
NOVEMBER 27TH AT THE LONG BEACH FIRE HALL**

QUESTIONS? CONTACT TIFFANY TURNER OR JOHANNA GUSTAFSON
TIFFANY@ADRIFTHOSPITALITY.COM
JOHANNA@ADRIFTHOSPITALITY.COM

South Pacific County
Humane Society

Cat PALOOZA



October 11 - 28
50% off adoption fees for
all cats & kittens.



Morty

Submit an adoption
application for a specific
cat/kitten or "view"



Elsie

Go to: www.beachpets.com
to see available
cats/kittens.

**SOUTH PACIFIC COUNTY
HUMANE SOCIETY**
Community-Funded Long Beach, WA

SOUTH PACIFIC COUNTY HUMANE SOCIETY

Rain or Shine

Annual Blessing of the Animals

October 28th 1:00pm

Outdoors: All Socialized Animals Welcome

330 Second St NE • Long Beach, WA

Donations
Most
Welcome!

In Honor of St Francis of Assisi
Patron Saint of Animals & the Environment

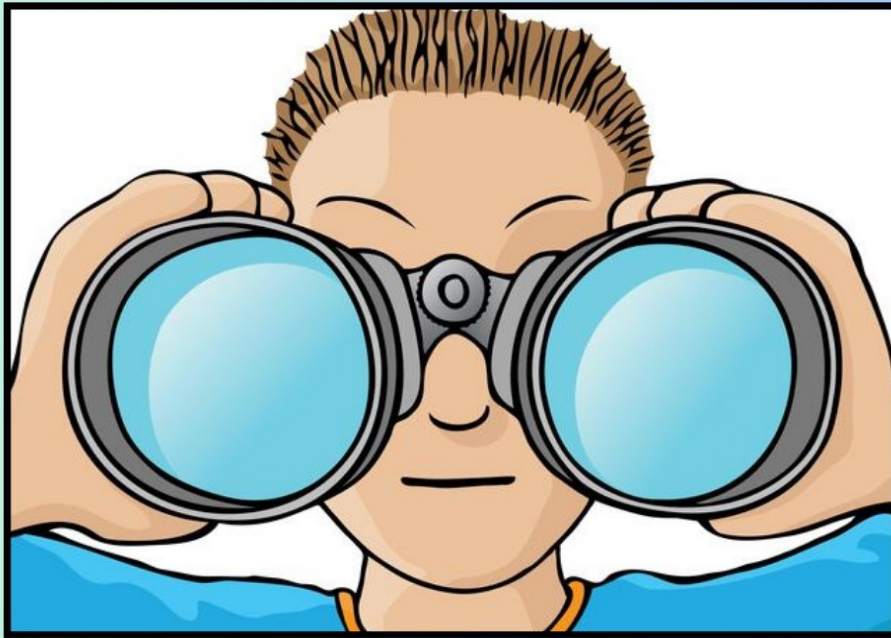
Blessing Courtesy of
The Rev Richard Loop, Vicar
St Peter Episcopal Church

FREE MULCH FOR MEMBERS AT THE CHIPPER SITE
350TH & G STREET



SURFSIDE AREA NEIGHBORHOOD WATCH

NEXT MEETING
NOVEMBER 9th
At 2p.m.



We are a group of concerned residents who want to deter crime in our community by being the “extra eyes and ears” of the Sheriff. Through familiarity with our block neighbors the group will strive to be aware, watching for suspicious activity and reporting it to the authorities. If you are interested in participating in this neighborhood watch partnership, please contact your neighbor at the number or email below.

Contact

John Curran

Phone

(602) 301-
7456

Email

Surfsideareanw@
gmail.com

Pacific County Emergency Notification System

The emergency notification system is a phone based way for PCEMA to contact Pacific County residents in the event of an emergency. Commonly referred to as “reverse 911”, this system can deliver emergency alert messages via landline phone, cellular phone, VoIP phone, or email address. Notifications can be made via voice or text. The system also offers residents the option to indicate whether they may require additional assistance due to physical mobility limitations.

Registering the additional information below with the Community Alerts option will allow your cellular phone, email, and/or TDD to be notified for local emergencies and community alerts as well.

Hyper-Reach will automatically call all landline numbers. You need to sign up for any cell number.

Click [HERE](#) to sign up for the Hyper-reach weather and community alerts system

FEEDING THE WILDLIFE

From the Department of Fish & Wildlife

Don't feed bears. Often people leave food out for bears so they can take pictures of them or show them to visiting friends. Over 90 percent of human-bear conflicts result from bears being conditioned to associate food with humans. A wild bear can become permanently food-conditioned after only one handout experience. **The unintended reality is that these bears will likely die, being killed by someone protecting their property, or by a wildlife manager having to remove a potentially dangerous bear.**

The number one reason for conflict, (95% of the calls to offices) is the result of irresponsibility on the part of people: Access to trash, pet food, bird feeders, deliberate feeding, and improper storage of food while camping make up the majority of the calls.

Bear attacks

Avoiding bear encounters, using the advice above, is the best way to prevent negative interactions between people and bears. Although black bear attacks are rare, anytime you are in bear habitat you should know what to do should an encounter occur. Here are tips should you come in close contact with a bear:

- Stop, remain calm, and assess the situation. If the bear seems unaware of you, move away quietly when it's not looking in your direction. Continue to observe the animal as you retreat, watching for changes in its behavior.
- If a bear walks toward you, identify yourself as a human by standing up, waving your hands above your head, and talking to the bear in a low voice. If you have bear spray, get it out of the holster and remove the safety.
- If you cannot safely move away from the bear or the bear continues toward you, scare it away by clapping your hands, stomping your feet, and yelling. If you are in a group, stand shoulder-to-shoulder and raise and wave your arms to appear intimidating. The more it persists the more aggressive your response should be. If you have bear spray, use it.
- Do not run from the bear. Bears can run up to 35 mph and running may trigger an attack. Climbing a tree is generally not recommended as an escape from an aggressive black bear, as black bears are adept climbers and may follow you up a tree.

For more information visit the WDFW at [www.https://wdfw.wa.gov/](https://wdfw.wa.gov/)

ARCHITECTURAL COMMITTEE

Plan on installing a fence, a shed, a gazebo or building a garage or a house?

REMINDER...

ALL building plans must be submitted to the Architectural Committee prior to any construction.

Pacific County will not approve permitting until the committee has signed off on all plans.

The committee meets every Tuesdays at 9 a.m. at the business office. The building packets are on our website at surfsideonline.org/forms/ or you can pick them up from the business office. Applications must be received by end of day on Thursdays to make the agenda for the following Tuesday's meeting.

Please notify the business office if you want to attend the meeting in person.

If you are building on a vacant lot without an address, please post a sign so the committee knows which lot will be developed.

Two (2) sets of plot plans must be submitted to the committee. Once approved, you will get a copy of the approved plan. Take it to the county for their approval as needed. Surfside will retain one set of approved plans to keep on file.

For more detailed information on the Architectural Committee duties and guidelines go to our website surfsideonline.org, select the Other tab, then Governing Documents. Download the Operations Manual and the Surfside Restrictive Covenants or call the business office 360-665-4171 with questions.

Thank you!

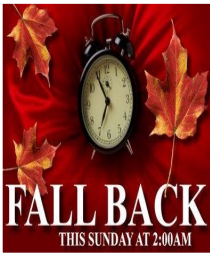

October 2023

SUN	MON	TUES	WED	THURS	FRI	SAT
1	2	3 AC 9am CRC 1:15p	4 RV Committee 1:30pm	5 Neighborhood Watch 2p	6 TBVN 1:30p Book Club 3p	7 Chili Cook-off 10 a
8	9	10 AC 9am	11 Budget Cmte. 10am	12 L, B, & W 9 WSP 10:30a	13	14
15	16 P & P 10 am	17 AC 9am	18 RV Cmte. 1:30pm	19 S & S 3p	20	21 Board Meeting 9a
22	23	24 AC 9am EMC 1:15 pm	25	26 WSP 10:30 a	27	28
29	30	31 AC 9am				

LEGEND

AC=Architectural CRC=Community Relations EMC=Emergency Management
 LBW=Land, Buildings and Waterways SS=Safety and Security P & P=Policy & Procedures
 TBVN=Tree, Brush, Vegetation and Noxious Weeds WSP=Water Systems Planning
 HR = Human Resources Committee

November 2023

SUN	MON	TUES	WED	THURS	FRI	SAT
		BUDGET	1 PREP WEEK	2	3 TBVN 1:30p	4
	6	7 AC 9am CRC 1:15p	8 Election Cmte. 10am RV Cmte 130p	9 L, B, & W 9 WSP 10:30a Neighborhood Watch 2p	10 Office Closed	
12	13	14 AC 9am	15 RV Cmte 10am Speaker Series 2p	16 S & S 3p	17	18 Budget Ratification/Board Meeting 9am
19	20 P & P 10 am	21 AC 9am	22			
26	27	28 AC 9am EMC 1:15 pm	29	30		

LEGEND

AC=Architectural CRC=Community Relations EMC=Emergency Management
 LBW=Land, Buildings and Waterways SS=Safety and Security
 TBVN=Tree, Brush, Vegetation and Noxious Weeds WSP=Water Systems Planning
 HR= Human Resources Committee