

31402 H St., Ocean Park, WA 98640



# Weekender

December 22, 2023

- Surfside Events
- Peninsula Events

Holiday Events	2
Holiday Events	3
Holiday Safety Tips for your pets	4
Foster Children's Christmas Program	5
Pay it forward with the Cove Restaurant	6
Mental Health Support	7
Compactor use/RV Winter Permits	8
Grab N Go Kit/315th Bridge Closure	9
Neighborhood Watch	10
Architectural Committee	11
December Calendar	12
January Calendar	13



*Your HOA extends their warmest wishes to you and yours this holiday season! Thank you for all you do to help make your neighborhood a wonderful place to live. However you celebrate, we hope that the holidays fill your home and your heart with joy, peace and happiness. We are truly grateful to serve you!*

*Kind regards,  
Your HOA Board and Staff*

### Compactor and Business Office Holiday Schedule

The compactor will be closed on Christmas Day and will re-open Tuesday, December 26th from 7-1.

Closed on New Year's Day and will re-open Tuesday, January 2nd from 7-1.

The business office will be closed on December 25th & 26th and re-open on Wednesday, December 27th. The business office will be closed on Monday, January 1st and re-open Tuesday, January 2nd.

**Yoga Class**  
Yoga classes will be cancelled for December.  
Happy Holidays to all!





**CHIPOTLE FUNDRAISER FOR  
SOUTH PACIFIC COUNTY  
HUMANE SOCIETY**

33% OF EVENT SALES GET DONATED TO THE CAUSE

**SATURDAY, JANUARY 6TH | 4-8PM**  
103A US-101, WARRENTON, OR, 97146

ORDER ONLINE FOR PICKUP USING CODE **AB4GF3G**  
OR SHOW THIS FLYER IN RESTAURANT



For online orders to count towards the fundraiser, they must be placed for pickup only from the restaurant location of, and during the hours of, the fundraiser. Delivery orders and gift cards do not qualify. \$150 minimum event sales required to receive any donation.



**Get Your Maple Dogs!**  
During the month of January  
50 cents of every Maple Dog sold  
donated to  
South Pacific County  
Humane Society

**Yum! Yum!**  
A raised donut  
filled with  
Bavarian creme  
and covered  
with maple  
frosting!



118 Pacific Ave S., Long Beach, WA  
Open 7 days/week 4 am - 5 pm

**SOUTH PACIFIC COUNTY  
HUMANE SOCIETY**  
Community-Funded ♥ Long Beach, WA

# ILWAGO SUNSET CHRISTMAS PARADE

**4 pm Saturday  
December 23, 2023**

**ON THE WATERFRONT AT THE  
PORT OF ILWAGO**

**Free!**

Fully licensed, registered & insured vehicles / trailers may enter the parade. Line up at the boat launch and enter from Elizabeth, westbound, onto Waterfront Way. Spectators may watch from the grassy area on the waterfront.

# Coats for Kids

NOVEMBER AND DECEMBER  
Call 360-665-0190 and ask  
for Stacey for current  
inventory

**DROP OFF/ PICK UP LOCATION**

GOLDEN SANDS  
21608 O LANE  
OCEAN PARK, WA 98640  
(behind the Sr. Center)

**DONATIONS ACCEPTED**

Warm Coats | Winter Jackets  
Waterproof Outerwear  
Scarves | Boots | Hats

**Golden Sands**  
A Retirement and  
Assisted Living Community





**RING IN THE NEW YEAR WITH US!!!**

The City of Long Beach, WA will be lighting off fireworks at the stroke of midnight on Dec. 31st, 2023, in front of the boardwalk.

Fireworks can be sold from December 27th-Dec. 30th; between the hours of Noon - 11 pm, but may not be discharged.

Fireworks can also be sold on Dec. 31st between the hours of Noon - 11 pm and may be discharged from 6 pm - 1 am (January 1st).

We wish you all a very HAPPY, SAFE, & HEALTHY NEW YEAR!

**New Year's Eve Party!  
Long Beach Elks #1937**



Bruee & "Texas Tribute" ZZ Top tribute  
Dinner at 630 pm, Music starts at 730 pm

Click [here](#) for more information

**NEW YEAR 'S EVE CELEBRATION**

AT THE MOOSE LODGE ON U ST

**PRIME RIB DINNER, MUSIC AND MIDNIGHT  
TOAST**

**TICKETS ARE \$35 PER PERSON & AVAILABLE AT  
THE BAR.**

**LIVE MUSIC BY F.O.G ( FOUR OLD GUYS)**

**SAY GOODBYE TO 2023 AND WELCOME IN 2024 IN  
STYLE.**



## HOLIDAY PET

# SAFETY TIPS



### Deck the halls safely.

- ▲ Avoid tinsel which can cause an intestinal blockage.
- ▲ Place fragile/ food-based ornaments high on the tree.
- ▲ Keep tree water covered.

### Skip the sweets.

- ▲ Chocolate, xylitol-sweetened candies & baked goods



### Ditch the dangerous plants.

- ▲ Mistletoe, holly, lilies, poinsettias, amaryllis



### Beware of toxic table scraps.

- ▲ Onions, garlic, raisins, grapes, macadamia nuts, bones, fatty trimmings
- ▲ Secure the trash can.



### Be on guard when opening gifts.

- ▲ Dispose of all ribbons, bows, and wrapping paper promptly.
- ▲ Be careful with button batteries in electronics and greeting cards.

### Help pets stress less.

- ▲ Set up a quiet space away from the festivities with toys, treats, and pheromone diffusers.
- ▲ Talk to our vets about medications or supplements to reduce anxiety.
- ▲ Make sure pets are microchipped.



© December 2023 PawsTime

**We wish you and your pets a safe and happy holiday!**



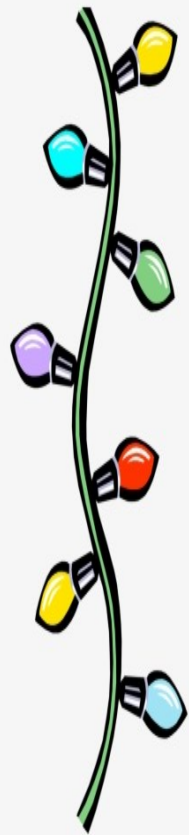
# 2023 FOSTER KIDS CHRISTMAS PROGRAM



“We would like to express our gratitude to all those who kindly donated their time and money towards the cause of bringing joy to local children this Christmas season.

“We would also like to extend our sincere appreciation to Louise Purdin for her commendable efforts in organizing and executing this event. Without her unwavering commitment and dedication, this event would not have achieved the remarkable success that it has.

“We Wish You All A Very Merry Holiday Season







The  
**COVE**  
RESTAURANT  
LONG BEACH • WA

## Pay it Forward Meal →

Join The Cove and OBSD to fill a tummy this holiday season. \$25 purchases a meal for two for those in need. #payitforward #spreadlove

The Cove Restaurant is partnering with Ocean Beach School District to provide Christmas meals to families who may not otherwise have a healthy meal this Christmas.

If you would like to join the effort and purchase a meal for a family this holiday season, please click the link below to our online menu and select "Pay-it-Forward Meals". \$25 purchases a meal for two.

<https://order.toasttab.com/online/thecoverestaurant>

The Cove Restaurant will cook a scrumptious, traditional Christmas meal and volunteers from the community will deliver meals on Christmas eve.

Thank you for your generosity!

Merry Christmas from the team at The Cove Restaurant.





## Strategies to support your mental health

### 1. Pay attention to your feelings.

*Remember that it is okay to feel unhappy during the holidays. Recognizing your feelings is the first step to addressing them.*

### 2. Develop a plan for when you are feeling stressed, sad, or lonely.

*This plan may include calling a friend or family member, going for a walk, or engaging in an activity that brings you joy.*

### 3. Connect with community.

*If you can't be near loved ones during the holidays, finding a supportive community through clubs, support groups, community centers or church.*

### 4. Know when to seek help.

*If you feel that your mental health struggles are becoming overwhelming and difficult to handle, it is important to seek help and know that treatment is available. 1-800-662-HELP (4357) or 988 Suicide and Crisis Lifeline*

## 7 TIPS TO MANAGE STRESS & MENTAL HEALTH DURING THE HOLIDAYS

**PLAN AHEAD**  
Have a plan in place for all your holiday tasks and activities.

**BE REALISTIC**  
Don't stress yourself out by trying to create the perfect holiday.

**STAY ACTIVE**  
Exercise is a great way to deal with holiday stress, and anxiety.

**DON'T WORRY**  
Don't feel obligated to complete every small thing on your list.

**JUST SAY NO**  
If you have too much on your plate, let your friends and family know.

**SET ASIDE DIFFERENCES**  
Enjoy other's company and talk about topics that bring happiness.

**ACKNOWLEDGE YOUR FEELINGS**  
Have a plan in place for all your holiday tasks and activities.

## Managing Grief During the Holidays

Keep old traditions and start new ones

Reflect on good memories

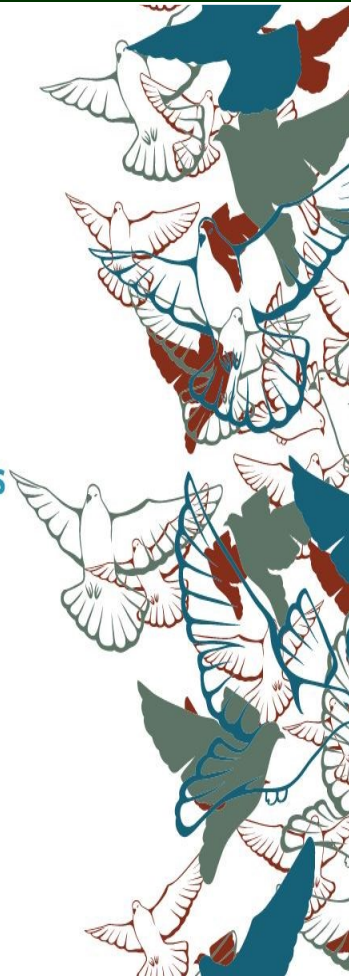
Spend time with loved ones

Memorialize your lost loved one

Practice self-care

Talk to a counselor

Visit a grief support group



## Compactor

The compactor is a great amenity for the community. We have had a bit of confusion regarding what types of items you can dispose of at the compactor.

- Maintained for the disposal of kitchen or “wet” garbage ·
- Wet garbage or refuse must be sealed in plastic moisture-proof bags ·
- Two 45- gallon bags (or equivalent)

### What we do not accept are the following:

- Construction or remodeling refuse.
- Large household items, e.g., rugs, TV’s, mattresses and box springs, appliances or other furniture. Yard debris, e.g., grass, shrub and tree trimmings ·
- **Animal Carcasses are not allowed in the compactor. Disposal must be done at the landfill and the Department of Fish & Wildlife must be notified. (WAC 246-203-121)**

**Compactor Attendant will monitor and enforce proper placing of materials.  
If you have any questions or concerns please contact the office at 360-665-4171**

## Winter RV Permit

We kindly want to remind you that winter permits are intended solely for occupancy purposes. Unfortunately, winter permits do not cover the storage of RVs on the lots.

If you are planning to visit over the winter, we offer the convenience of requesting a winter permit at any time. You are granted a generous 60-day period to utilize as per your preference. Additionally, permits can be written for a maximum of 21 days at a time, allowing a total of 60 days for your stay.

To accommodate your needs, we are happy to arrange for permit pick-up, even if you are arriving after hours. Alternatively, we can also email the permits to you in advance, ensuring you have them prior to your visit.

Please call the office to request your permit or to just ask questions. 360.665.4171





# Surfside Emergency Management Committee

Do you have emergency blankets in your to go kit? [Emergency Blankets](#)

**WSDOT**

## Winter Driving Supply Checklist

Accidents, pass closures and other winter events can mean unexpected time in your car. Be prepared. Pick up these items on your next shopping run and then pack them into your vehicle.

Pick up shopping	Packed in car		Pick up shopping	Packed in car	
<input type="checkbox"/>	<input type="checkbox"/>	Flashlight	<input type="checkbox"/>	<input type="checkbox"/>	Cell phone charger/battery booster
<input type="checkbox"/>	<input type="checkbox"/>	Extra batteries	<input type="checkbox"/>	<input type="checkbox"/>	Tire chains
<input type="checkbox"/>	<input type="checkbox"/>	Blanket	<input type="checkbox"/>	<input type="checkbox"/>	Ice scraper/snowbrush (a small shovel comes in handy too)
<input type="checkbox"/>	<input type="checkbox"/>	Nonperishable food/snacks	<input type="checkbox"/>	<input type="checkbox"/>	Jumper cables
<input type="checkbox"/>	<input type="checkbox"/>	Water	<input type="checkbox"/>	<input type="checkbox"/>	Flares/warning triangle
<input type="checkbox"/>	<input type="checkbox"/>	Gloves	<input type="checkbox"/>	<input type="checkbox"/>	Kitty litter or sand to help with traction
<input type="checkbox"/>	<input type="checkbox"/>	Boots	<input type="checkbox"/>	<input type="checkbox"/>	Whistle to signal for help
<input type="checkbox"/>	<input type="checkbox"/>	First aid kit			

If you find yourself stuck or stranded, stay in your car, put on your flashers, call for help and wait until it arrives.

# IS YOUR GRAB & GO KIT, READY TO GO?



What is a Grab & Go Kit?  
Why do I want/need one?  
How do I get one?

To find out, go to: "Prepare in a Year"



<https://mil.wa.gov/preparedness>  
Emergency Management Division  
Washington State



## 315th Bridge Closure

The bridge at 315th has been closed due to a car accident. Pacific County will have an inspector come out to survey the damage.

Heading North on I St. you can use H St. at 300th to come to the office or if you are heading South on I St. turn onto 338th and follow it down to 315th.

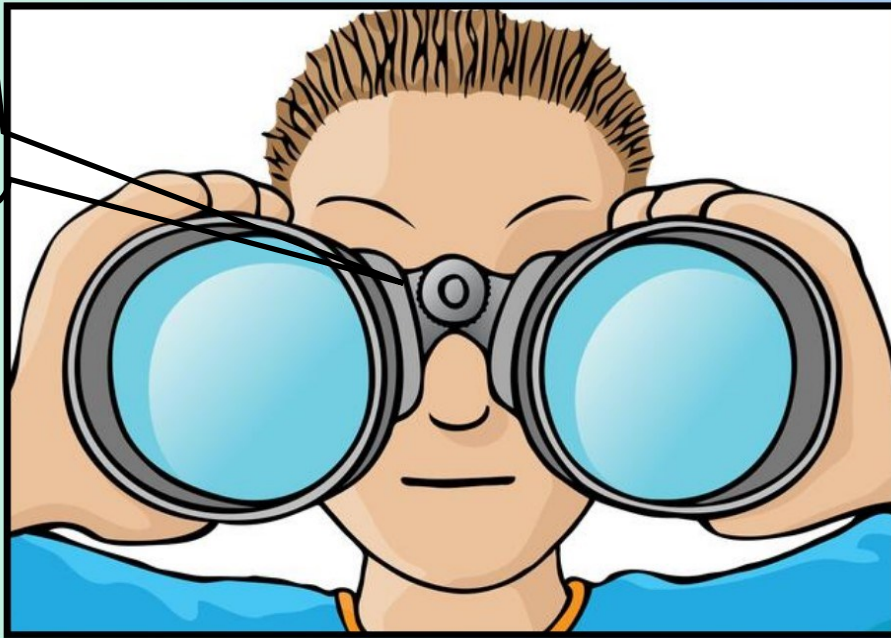
We do not have a timeline for repairs. We will give updates as we receive them.

We appreciate your patience.



# SURFSIDE AREA NEIGHBORHOOD WATCH

Next Meeting  
January 4th at  
2pm



We are a group of concerned residents who want to deter crime in our community by being the “extra eyes and ears” of the Sheriff. Through familiarity with our block neighbors the group will strive to be aware, watching for suspicious activity and reporting it to the authorities. If you are interested in participating in this neighborhood watch partnership, please contact your neighbor at the number or email below.

Contact

John Curran

Phone

(602) 301-  
7456

Email

Surfsideareanw@  
gmail.com



# ARCHITECTURAL COMMITTEE

Plan on installing a fence, a shed, a gazebo or building a garage or a house?

REMINDER...

ALL building plans must be submitted to the Architectural Committee prior to any construction.

*Pacific County will not approve permitting until the committee has signed off on all plans.*

The committee meets every Tuesdays at 9 a.m. at the business office. The building packets are on our website at [surfsideonline.org/forms/](http://surfsideonline.org/forms/) or you can pick them up from the business office. Applications must be received by end of day on Thursdays to make the agenda for the following Tuesday's meeting.

**Please notify the business office if you want to attend the meeting in person.**

**If you are building on a vacant lot without an address, please post a sign so the committee knows which lot will be developed.**

**Two (2) sets of plot plans must be submitted to the committee.** Once approved, you will get a copy of the approved plan. Take it to the county for their approval as needed. Surfside will retain one set of approved plans to keep on file.

For more detailed information on the Architectural Committee duties and guidelines go to our website [surfsideonline.org](http://surfsideonline.org), select the Other tab, then Governing Documents. Download the Operations Manual and the Surfside Restrictive Covenants or call the business office 360-665-4171 with questions.

Thank you!



# December 2023

SUN	MON	TUES	WED	THURS	FRI	SAT
					1	2
3	4 AMS Workshop 11 am	5 AC 9AM CRC1:15 P	6	7 WSP 1030a Neighborhood Watch 2p	8	9
1	11	12 AC 9 AM	13	14	15	16
17	18	19 AC 9AM	20	21	22	23
24	25	26 Office Closed 	27	28	29	30
31 New Year's Eve						

## LEGEND

AC=Architectural   CRC=Community Relations   EMC=Emergency Management  
 LBW=Land, Buildings and Waterways   SS=Safety and Security   P & P=Policy & Procedures  
 TBVN=Tree, Brush, Vegetation and Noxious Weeds   WSP=Water Systems Planning  
 HR = Human Resources Committee

# January 2024

SUN	MON	TUES	WED	THURS	FRI	SAT
<del>Happy New Year</del>	1 Office Closed	2 AC 9a CRC 1:15 pm	3	4 Neighborhood Watch 2pm	5 TBVN 130p	6
	7	8	9 AC 9a	10	11 L, B, W 9am WSP 10:30 am	12
14	15 Martin Luther King Day	16 AC 9a	17	18 S & S 3p	19	20 Regular Board Mtg 9am
21	22	23 AC 9a	24	25	26	27
28	29	30 AC 9a EMC 1:15 pm	31			

**LEGEND**

AC=Architectural    CRC=Community Relations    EMC=Emergency Management  
 LBW=Land, Buildings and Waterways    SS=Safety and Security  
 TBVN=Tree, Brush, Vegetation and Noxious Weeds    WSP=Water Systems Planning  
 HR= Human Resources Committee